



SUSTAINABLE DEVELOPMENT GOALS

BUDGET FY 2025-26

DEPARTMENT OF FINANCE
GOVERNMENT OF MEGHALAYA

Contents

Executive Summary	4
1 Building Blocks for Sustainable Growth: Introduction	5
1.1 Meghalaya's Pursuit of Sustainable Development	5
1.2 Meghalaya's SDG Trajectory: Demonstrating Tangible Progress	6
1.3 Mission 10 and its Synergistic Alignment with the SDGs	7
1.4 Key Initiatives Undertaken for SDG Acceleration	8
2 Budgeting for the SDGs: Taxonomy and Methodology	12
2.1 Development of a Taxonomy	12
2.2 Process and Methodology of SDG Budget	14
3 Understanding the SDG Budget 2024-2025	15
3.1 SDG Budget Allotment	15
3.2 Goal-wise Analysis of Budget Allocation	19
Goal 1: No Poverty	19
Goal 2: Zero Hunger	20
Goal 3: Good Health and Well-being	21
Goal 4: Quality Education	22
Goal 5: Gender Equality	23
Goal 6: Clean Water and Sanitation	24
Goal 8: Decent Work and Economic Growth	26
Goal 9: Industry, Innovation and Infrastructure	27
Goal 10: Reduced Inequalities	28
Goal 13: Climate Action	31
Goal 15: Life on Land	32
Goal 16: Peace, Justice and Strong Institutions	33
4 Way Forward	34
Annexure	35





Executive Summary

Meghalaya's 2025-26 budget, allocating ₹30002.98 Crores, marks the State's fourth consecutive SDG-aligned budget, demonstrating a comprehensive commitment to sustainable and equitable development. With 100% alignment of the State budget to the Sustainable Development Goals (SDGs), the budget reflects a holistic approach where all State activities, from infrastructure to social welfare, contribute to achieving a prosperous, inclusive, and resilient future. Key allocations highlight this commitment, with significant investments in Quality Education, Industry, Innovation, and Infrastructure, and Good Health and Wellbeing, demonstrating a balanced focus on human capital, economic growth, and social welfare.

The budget strategically targets fundamental needs and long-term sustainability through substantial allocations across critical SDG goals. Investments in initiatives like the Infrastructure Development across the departments, Sarva Shiksha Abhiyaan (SSA), Power distribution, Pradhan Mantri Gram Sadak Yojna (PMGSY) for rural connectivity, Mahatma Gandhi National Rural Employment Guarantee Scheme (MGNREGS), Jal Jeevan Mission, Construction of Outdoor and Indoor Stadiums and the National Health Mission (NHM) underscore the State's dedication to poverty alleviation, improved infrastructure, quality education, and healthcare & other public facilities. Furthermore, programs addressing gender equality, clean water and sanitation, affordable energy, and climate action highlight Meghalaya's broad-based approach to addressing the interconnected challenges of sustainable development.

Finally, the budget emphasizes building resilient infrastructure and fostering strong institutions to ensure long-term progress. Investments in road development, technology parks, urban infrastructure, and law enforcement capabilities are designed to promote economic growth, enhance connectivity, and ensure public safety. By prioritizing inclusive development and sustainable resource management, Meghalaya aims to create a more equitable and prosperous society, aligning with the core principles of the SDGs and paving the way for a sustainable future for its citizens.

1 Building Blocks for Sustainable Growth: Introduction

Meghalaya, nestled in the heart of Northeast India, is a State rich in natural resources and cultural heritage, yet it faces unique challenges in its pursuit of inclusive and sustainable development. Characterized by its predominantly tribal population, rugged terrain, and reliance on agriculture and tourism, the State's development trajectory must balance economic growth with environmental preservation and social equity. This budget document outlines Meghalaya's strategic approach to achieving the Sustainable Development Goals (SDGs), reflecting a commitment to building a prosperous and resilient future for its citizens.

1.1 Meghalaya's Pursuit of Sustainable Development

The Sustainable Development Goals (SDGs), born from the pivotal United Nations Conference on Sustainable Development in Rio de Janeiro 2012, represent a global consensus on the path to a prosperous and equitable future. This ambitious agenda, encompassing 17 interconnected goals, provides a shared blueprint for addressing the world's most pressing socio-political, economic, and environmental challenges. By aiming to eradicate poverty, reduce inequalities, ensure universal health and well-being, and drive sustainable economic growth, the SDGs offer a transformative vision for our planet.

The Government of India (GoI) has demonstrated unwavering commitment to this vision, actively integrating the SDGs into its national development strategy. Recognizing the crucial role of sub-national action, India has fostered a robust framework for SDG localization, promoting cooperative and competitive federalism. This approach empowers States like Meghalaya to tailor their development agendas to local contexts, while contributing to national and global targets. The development of comprehensive national and Northeast-specific indicator frameworks further strengthens this process, providing essential tools for planning, implementation, and rigorous monitoring of SDG-aligned programs across the country. These frameworks ensure that progress is measured, and strategies are refined for maximum impact.

In Meghalaya, the pursuit of sustainable development is guided by the principle of 'balanced progress,' a philosophy that prioritizes economic prosperity without sacrificing the State's rich ecological heritage or its unique social fabric. This vision is deeply rooted in empowering communities, especially those in rural and underserved areas, through enhanced access to quality education, comprehensive healthcare, and sustainable livelihood opportunities. Meghalaya recognizes its extraordinary biodiversity as a cornerstone of its identity and economy, committing to its meticulous conservation. Furthermore, the State actively cultivates a culture of innovation and entrepreneurship, fostering sustainable economic diversification and creating green jobs that respect the environment. Meghalaya's aspiration is to build a future where every citizen enjoys a high quality of life, living in harmony with nature, and actively contributing to a sustainable and equitable world. This budget document reflects the State's dedication to translating this vision into tangible action, aligning its resources and policies with the global SDG agenda.

1.2 Meghalaya's SDG Trajectory: Demonstrating Tangible Progress

Meghalaya's progress in achieving the SDGs, as measured by the NITI Aayog's SDG India Index, demonstrates a dedication to ongoing advancement. The 2024 Index, placing Meghalaya at position 25, reflects the competitive landscape of SDG implementation across India. While this mirrors the State's 2019 ranking, the intervening period saw Meghalaya achieve a position of 21 in 2020, showcasing its capacity for significant improvement. This shift underscores the dynamic nature of SDG achievement and the rapid advancements being made by other States across India.

In light of the 2024 ranking, Meghalaya is poised to undertake a strategic review of its SDG implementation, identifying key areas for targeted interventions and leveraging its unique resources to regain momentum and accelerate progress towards its sustainable development goals. This budget document itself serves as a crucial tool for this strategic review, reflecting Meghalaya's renewed commitment to growth and providing the necessary resources for targeted interventions across key SDG priorities.

In recent years, the State has demonstrated notable progress in several critical areas. Specifically, Meghalaya has shown commendable advancements in climate action (SDG 13), driven by robust forest conservation efforts and the expansion of renewable energy sources, particularly hydropower. The State's commitment to preserving its natural forest cover has been a key factor in this achievement. Furthermore, initiatives aimed at improving access to clean energy in rural areas have contributed to positive outcomes in SDG 7. While challenges remain in areas such as poverty reduction (SDG 1) and nutrition (SDG 2), Meghalaya is actively implementing targeted interventions to address these gaps. The State's focus on strengthening its healthcare system (SDG 3) and improving educational outcomes (SDG 4) is yielding positive results, laying a strong foundation for future progress.

Meghalaya is committed to building upon its strengths, learning from its experiences, and accelerating its efforts to achieve the State's vision through its targets for Mission 10.



1.3 Mission 10 and its Synergistic Alignment with the SDGs

Meghalaya's "Mission 10" is a dynamic and integrated development agenda, acting as a powerful catalyst for achieving the SDGs. This mission strategically focuses on ten pivotal sectors, each carefully chosen to address the State's most pressing needs. Launched in 2022, Meghalaya's Mission 10 is a decade-long transformative initiative with the ambitious goal of positioning the State among India's top 10 by 2032. This mission strategically focuses on ten key opportunities, including investment promotion, technological advancement, and sustainable tourism, to drive economic growth. By the time of State's 60th anniversary, Mission 10 aims to deliver ten crucial commitments to its citizens, encompassing essential services like reliable power, clean water, quality healthcare, and enhanced connectivity, ensuring sustainable and equitable development for all. This comprehensive approach directly aligns with the Sustainable Development Goals, addressing poverty reduction, infrastructure development, environmental sustainability, and social equity, thereby contributing to the broader global agenda for a better future.

This alignment with the SDGs is not coincidental but deliberately engineered. Mission 10 is not just a collection of projects; it's a strategic framework that synergizes with the SDGs, ensuring that every initiative contributes to a broader, globally recognized vision of sustainable development. This integrated approach allows Meghalaya to maximize its impact and accelerate its progress. The State's 100% SDG budget is a testament of this agenda.

In essence, Meghalaya's commitment to sustainable development is woven into the fabric of its governance, from its foundational principles to its strategic initiatives. The State's dedication to balanced progress, its proactive engagement with the SDG framework, and the transformative potential of Mission 10 collectively lay the groundwork for a prosperous and resilient future.

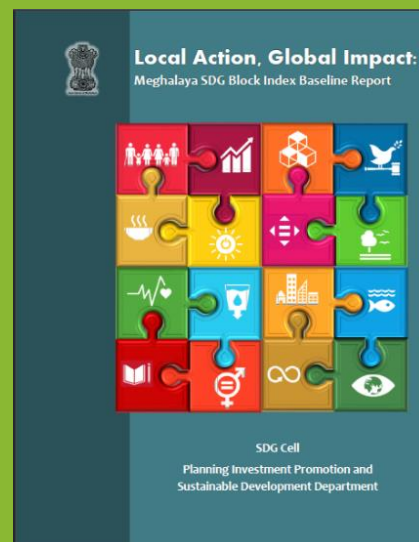


1.4 Key Initiatives Undertaken for SDG Acceleration

Meghalaya has witnessed significant development in SDG-aligned sectors through focused efforts by the State government and its allied departments including the SDG cell. Some key interventions it has taken over the past year to accelerate its progress include-

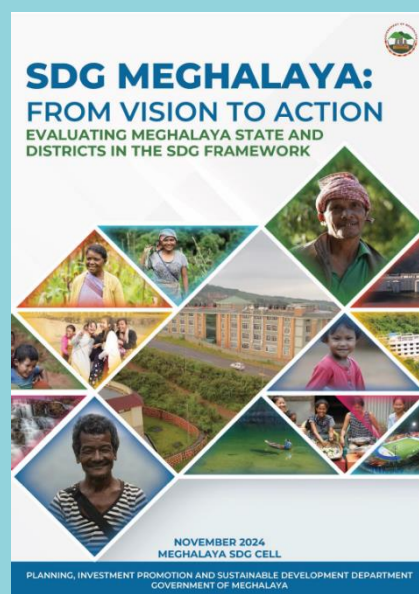
Meghalaya SDG Block Baseline Report

This report represents a pivotal step in Meghalaya's SDG journey, offering the State's first comprehensive block-level assessment. It provides a detailed roadmap for achieving the 2030 Agenda by analyzing block-specific performance across all SDGs, utilizing a tailored Block Indicator Framework (BIF). The report not only identifies opportunities and challenges at the grassroots level but also offers actionable recommendations, showcases best practices, and emphasizes the importance of data-driven decision-making, capacity building, and collaborative strategies to ensure that the benefits of sustainable development reach all communities within Meghalaya.



Vision to Action: Meghalaya District Report

This report, "From Vision to Action: Evaluating Meghalaya and Districts in the SDG Framework," presents a comprehensive assessment of Meghalaya's progress towards the Sustainable Development Goals, with a specific focus on district-level performance. It details the State's strategic initiatives, data-driven methodology, and ranking system used to evaluate each district's contribution to SDG achievement, while also outlining the challenges and opportunities inherent to Meghalaya's unique context. By analyzing goal-wise performance and highlighting both successes and areas needing improvement, the report serves as a crucial tool for guiding future strategies and accelerating Meghalaya's journey towards a sustainable and equitable future.



Cabinet Retreat

The Meghalaya Cabinet Retreat 2025 was a strategic, multi-day event designed to foster inter-departmental collaboration and accelerate the State's progress towards its Vision 2032 goals. It brought together senior political leaders and civil servants for six thematic sessions focused on key areas like economic growth, infrastructure, social development, and environmental sustainability, resulting in 107 actionable points. The retreat aimed to enhance governance, streamline policy implementation, and align departmental strategies with the State's development priorities, ultimately driving Meghalaya towards achieving its ambitious targets, including a \$10 billion economy and top 10 State status.



SDG Conclave

A two days' conclave was organized by the SDG Cell in collaboration with GIZ India to kick-start the Indo-German cooperation on SDG Localization in Meghalaya. The first day witnessed a day long deliberation on the non-performing SDG indicators in the State to identify the challenges and strategize ways to increase the indicator wise performance. The meeting was chaired by the Commissioner & Secretary, Planning, Investment Promotion and Sustainable Development Department and a total of 20 departments participated. The second day was followed up with an SDG Conference with the Deputy Commissioners of the 12 districts of Meghalaya. This session was presided by the Hon'ble CM, Meghalaya, Senior Advisor of NITI Aayog, the State, UNDP India and GIZ India. Along with brainstorming and deliberation on ways to improve the SDG rankings, the SDG cell published two reports, "SDG Meghalaya: From Vision to Action 2024" and "SDG Block Baseline Report: Local Action, Global Impact 2024."



Early Childhood Development Mission

In an effort to raise awareness within the community on Early Childhood Development, a Block Convention Program was held across 15 blocks. Regions wise training sessions were conducted for block and cluster officials from various line departments. The training focused on the key concepts of Early Childhood Development, utilising simple IEC materials and games to address toxic stress in children's environments. After the training, all blocks were notified to implement the sensitisation program in all villages.



CM Catalytic Fund

The Government of Meghalaya launched the CM Catalytic fund phase II in Dec 2024. The Catalytic fund is designed to empower Deputy Commissioner (DCs) and support the implementation of targeted interventions in key areas such as health, education, livelihoods, infrastructure, and the environment, thereby fast tracking progress on Sustainable Development Goal (SDG) indicators at the district level. The fund is structured to support both targeted project-based interventions and foster competition through incentivisation of performance. Districts will be evaluated on various parameters, including the effective implementation of flagship programs, identification and resolution of local issues and overall progress in achieving the SDGs. For 2024-25, the total financial outlay for the CM Catalytic Fund is ₹ 12 crores.








2 Budgeting for the SDGs: Taxonomy and Methodology

Meghalaya has strategically positioned the Sustainable Development Goals (SDGs) at the forefront of its development agenda, demonstrating this commitment through the establishment of a dedicated SDG Cell and the meticulous alignment of departmental activities with the 16 actionable goals. The State's approach to SDG-aligned budgeting serves two critical objectives: firstly, to transparently quantify and demonstrate the State budget's direct contribution to achieving the SDGs; and secondly, to embed SDG principles and financing strategies into local planning processes, fostering a bottom-up approach to sustainable development. Recognizing that effective SDG financing necessitates a shared understanding across government and civil society, Meghalaya employs a robust SDG taxonomy. This taxonomy acts as a unifying framework, providing a common language and structure for stakeholders to identify, track, and evaluate SDG-related expenditures. By fostering this shared understanding, Meghalaya aims to enhance accountability, promote collaboration, and ensure that financial resources are strategically allocated to maximize impact and accelerate progress towards the 2030 Agenda.

2.1 Development of a Taxonomy

Recognizing that the wide-ranging nature of the SDGs can result in diverse approaches to action alignment and fund allocation, potentially hindering transparency, Meghalaya has developed a standardized SDG taxonomy. This taxonomy serves as a rationalized classification framework, explicitly linking budget expenditures to corresponding SDG goals and targets. To demonstrate the taxonomy's practical use, we provide an illustrative overview, featuring a single target per goal to offer a clear and concise understanding of its structure.

Table 1: Illustrative Taxonomy of SDG Tagging

SDG	SDG Target	Key Words	Association Criteria
	1.3	Social Protection Systems; Coverage of Poor & Vulnerable	Expenditure aimed at policies that direct social protection coverage, productive economic resources and poverty eradication actions
	2.2	Malnutrition; Food Security; Nutritional Needs	Expenditures aimed towards ensuring food security, and mitigating malnutrition risks and affects among the population
	3.8	Health Coverage; Medicines; Health Services	Expenditure aimed towards providing universal access to health services
	4.1	Primary and Secondary Education; Learning Outcomes	Expenditure aimed towards ensuring equitable access to education and sustaining learning outcomes across ages
	5.1	Gender-based Discrimination and Violence; Equal Opportunities	Expenditure aimed towards inclusion of women on equitable terms and prevention of atrocities against them

	6.6	Protection and Restoration of Ecosystems; Water Resources	Expenditures aimed at protection and re-establishment of ecosystems related to water resources
	7.1	Access to Energy Services	Expenditures aimed towards providing universal access to affordable and reliable energy
	8.2	Productivity; Decent Job Creation; Technical Upgrades and Innovation	Expenditure directed towards job creation and creating productive economies
	9.1	Resilient Infrastructure; Affordable and Equitable Access to Public Places; ICT enablement	Expenditure towards enhancing digital technologies, developing resilient infrastructure and supporting scientific research
	10.2	Inclusion; Representation; Socio-Political Engagement	Expenditure aimed towards enhancing and promoting representative social, economic, and political engagement
	11.2	Sustainable Transport; Road Safety; Safe Human Settlements	Expenditure directed at deploying safe and accessible public transport, and providing inclusive basic services
	12.2	Sustainable Management; Conservation; Natural Resources	Expenditures aimed at policies that promote efficient and sustainable use of natural resources, and cleaner production processes
	13.1	Climate Change; Resilience; Adaptation	Expenditure towards promoting climate adaptation, and preparedness for climate-change related risks and natural disasters
	15.1	Conservation; Sustainable Use of Ecosystems; Protection of Natural Resources and Fauna	Expenditures aimed towards conservation, restoration and sustainable use of ecosystems for socio-economic activities
	16.6	Efficient and Transparent Institutions	Expenditure directed towards development of public institutions, and building efficiency and transparency

This taxonomy was finalized through a consultative process with the departments to ensure accuracy. The application of any methodology for budget tagging, in an exercise as extensive as SDG budgeting and implication of local understanding and practices on it, holds a subjective component.

In cases where budget items seem to align with more than one goal, the item has been tagged to the more appropriate goal..

2.2 Process and Methodology of SDG Budget

The process and methodology of the SDG budgeting consists of a four-step process as illustrated in the figure below-

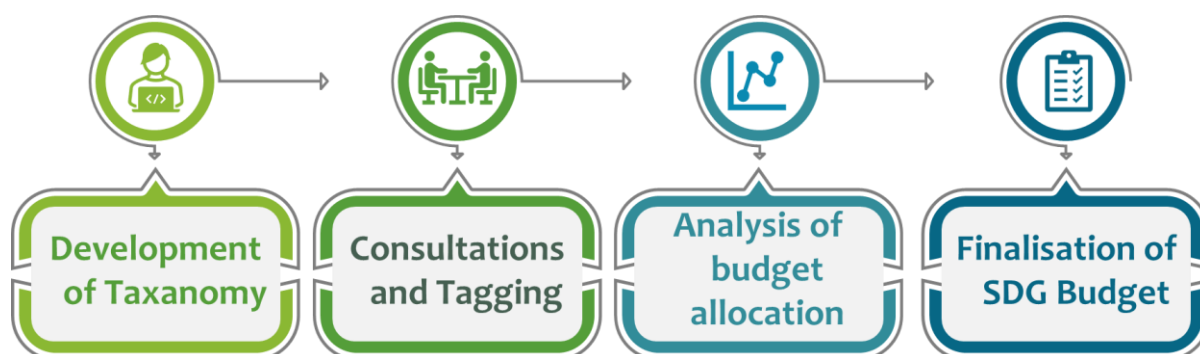





Image 1: Process and Methodology of SDG Budget

Process	Methodology
 Taxonomy and SDG Alignment	The development of a taxonomy is supported by the SDG programming exercise undertaken by the departments. The State has developed a toolkit for the departments, which enables outcome-based budgeting towards SDGs. This was done following the finalization of the State Indicator Framework.
 Consultation & Budget Tagging	The budget items are tagged to the SDGs as per the taxonomy in consultation with the departments.
 Budget Analysis	The tagged budget is analysed to understand allocation to achieve various targets and decipher trends in expenditure

All of the State's expenditure, whether directly or indirectly related to the SDGs, is tagged under the SDG budget. By tagging all expenditures under the SDG budget, the State demonstrates its dedication to a strategic approach, ensuring that all initiatives contribute to the overarching goal of sustainable and inclusive growth. The methodology for the State's budget allocation includes a provision for budget items not directly tagged to a specific goal. These untagged budget items will be proportionately divided across all SDGs, ensuring that every aspect of the budget contributes to the overall development agenda. This approach guarantees that no goal is overlooked and that resources are distributed in a manner that supports the holistic achievement of all SDGs.

Note: Goal 14: Life under Water has not been included in the computation of scores as it is not relevant to Meghalaya, as it is not a coastal State.

3 Understanding the SDG Budget 2024-2025

Meghalaya's fourth consecutive SDG budget, with a total allocation of ₹30002.98 Crores, signifies an unwavering and comprehensive commitment to equitable and sustainable development across the State. This budget represents 100% alignment with the Sustainable Development Goals, reflecting a fundamental recognition that all State activities, regardless of their immediate sectoral focus, contribute to the acceleration of SDG achievement. 78.47% of the State's budget is directly tagged to the SDG goals, and 21.53% of the budget is untagged expenditure proportionately allocated to each goal.

In Meghalaya's context, every rupee spent, whether on infrastructure development, healthcare, education, or environmental conservation, is intrinsically linked to the State's broader vision of a prosperous, inclusive, and resilient future. This holistic approach acknowledges the interconnectedness of the SDGs, where advancements in one area invariably support progress in others. By integrating SDG considerations into every aspect of budgetary planning, Meghalaya ensures that its development trajectory is not only economically viable but also socially just and environmentally sound, paving the way for a truly sustainable future.

3.1 SDG Budget Allotment

The figure below presents the goal-wise allotment of the SDG budget 2025-2026.



Figure 1: Goal-wise Allocation of SDG Budget

Meghalaya's 2025-26 budget reflects a strong commitment to the Sustainable Development Goals (SDGs), with significant allocations across key areas. Quality Education receives the highest allocation at ₹3677.60 Crores, underscoring the State's focus on human capital development. This is followed closely by Industry, Innovation, and Infrastructure with ₹4242.32 crores, and then Good Health and Wellbeing with ₹2436.19 crores, demonstrating a dedication to building a robust and healthy society. Other significant allocations include No Poverty at ₹2106.58 Crores and Clean Water and Sanitation at ₹1403.09 Crores, highlighting the State's efforts to address fundamental needs. Overall, the budget demonstrates a broad-based approach to achieving the SDGs, with investments across social, economic, and environmental dimensions.

Below is the direct and untagged Goal-wise allocation of the budget along with the revised estimated for the year 2025-26:

Goal	Actual Expenditure 2023-24 (in Crores)	Budget Estimates 2024-25 (in Crores)	Budget Estimates 2025-26 (in Crores) Direct Tagging	Budget Estimates 2025-26 (in Crores) Share of Untagged Allocation
Goal 1 : No Poverty	1214.07	1495.70	2106.58	578.04
Goal 2: Zero Hunger	529.57	1092.52	1462.06	401.19
Goal 3: Good Health and Wellbeing	1068.25	1536.27	2436.19	668.49
Goal 4: Quality Education	2228.71	2851.78	3677.60	1009.13
Goal 5: Gender Equality	16.00	87.08	135.66	37.23
Goal 6: Clean Water and Sanitation	534.44	917.93	1403.09	385.01
Goal 7: Affordable and Clean Energy	959.30	1043.29	1386.59	380.48
Goal 8: Decent Work and Economic Growth	293.10	746.22	1157.64	317.66
Goal 9: Industry, Innovation and Infrastructure	2039.53	2815.09	4242.32	1164.09
Goal 10: Reduced Inequalities	80.26	202.63	285.31	78.29
Goal 11: Sustainable Cities and Communities	740.07	1165.96	1728.01	474.16
Goal 12: Responsible	118.47	241.41	253.79	69.64

Goal	Actual Expenditure 2023-24 (in Crores)	Budget Estimates 2024-25 (in Crores)	Budget Estimates 2025-26 (in Crores) Direct Tagging	Budget Estimates 2025-26 (in Crores) Share of Untagged Allocation
Consumption and Production				
Goal 13: Climate Action	138.40	359.17	384.98	105.64
Goal 15: Life on Land	170.43	241.03	303.81	83.36
Goal 16: Peace, Justice and Strong Institutions	1903.79	2411.73	2579.23	707.74

The top 5 departments contributing substantially to the SDG budget are Education and Human Resources, Public Works, Health & Family Welfare, Community & Rural Development, and Planning Department as seen in the illustration below-

Top five Department Contribution to SDG Budget

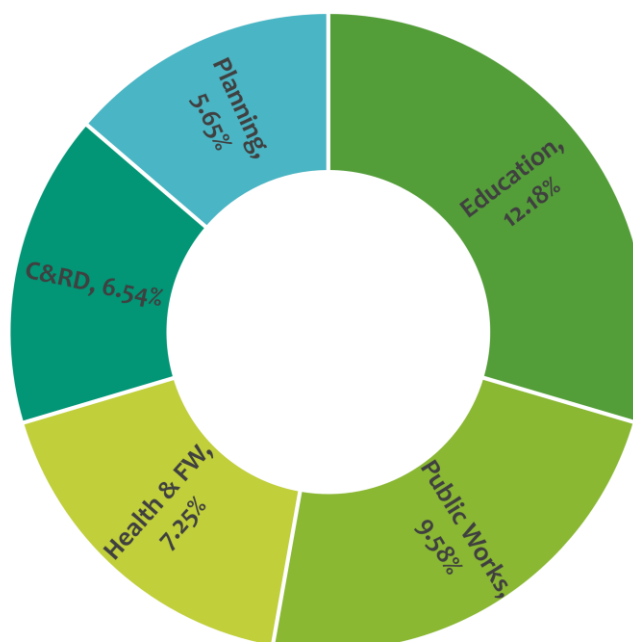
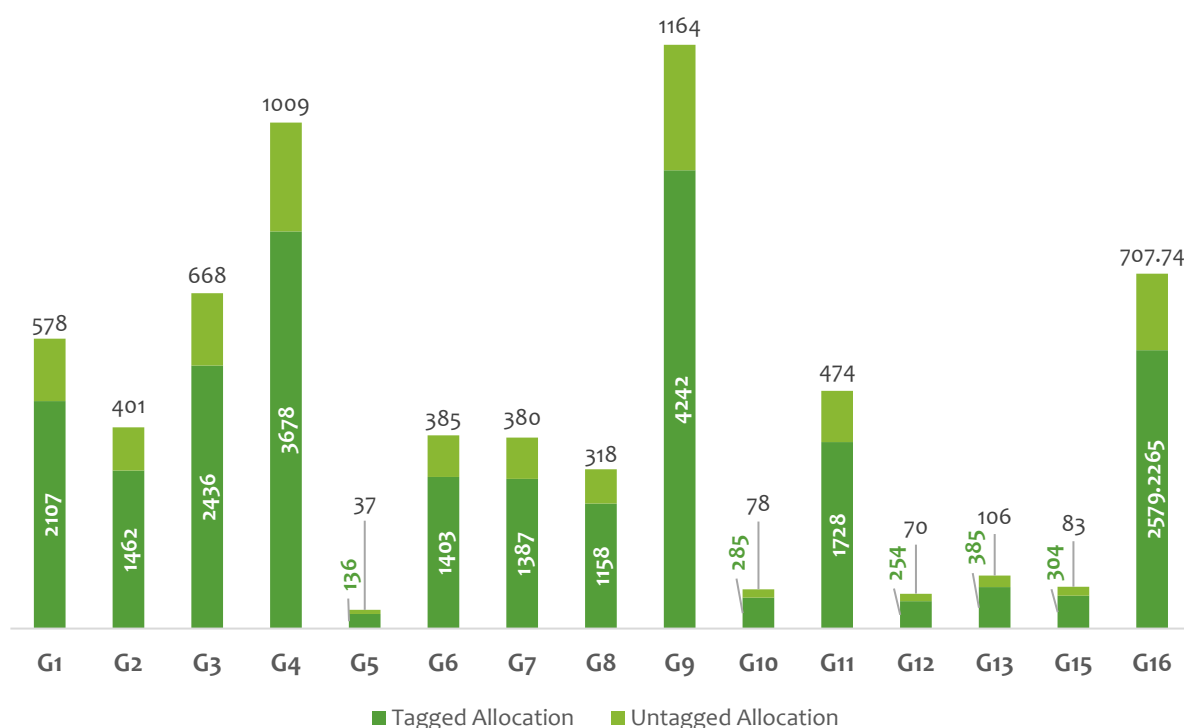


Figure 2: Top 5 Department Allocation to the SDGs 2025-2026

SDG Goal wide Tagged and Untagged Allocation in FY 26 (in Rs. Crores)



The Sustainable Development Goals (SDG) budget allocation highlights significant investments in several key areas. 78.47% of the State's budget is directly tagged to the SDG goals, and 21.53% of the budget is untagged expenditure proportionately allocated to each goal. Notably, Goal 9 receives the highest allocation with a tagged amount of 4242.3 Crores and an untagged amount of 1164.1 crores, reflecting its critical importance. Following closely, Goal 4 is allocated 3677.5 Crores in tagged funds and 1009.13 Cr. in untagged funds, underscoring its priority. Goal 3 also stands out with a tagged allocation of 2436.1 Cr. and an untagged allocation of 668.49 Cr. These top three goals collectively represent a substantial portion of the budget, indicating a focused effort to address these specific areas comprehensively. The remaining goals, while also important, receive comparatively lower allocations, ensuring a balanced yet prioritized approach to achieving the SDGs.

The following section of the report discusses the goal-wise allocation of the SDG budget. This provides an insight into the key focus areas of the SDG and expected outcomes from the expenditure. Further, it highlights the top contributors to the SDG, streamlining the readers understanding of the pivotal actors in the area.

3.2 Goal-wise Analysis of Budget Allocation

Goal 1: No Poverty

Objective: To eradicate poverty in all its forms across Meghalaya by implementing comprehensive, multi-faceted policies and programs that foster inclusive economic growth and strengthen social protection systems

The State budget’s allocation to Goal 1 highlights a strong commitment to mitigating poverty and improving rural livelihoods. Significant allocations to the Mahatma Gandhi National Rural Employment Guarantee Scheme (MGNREGS) and the National Rural Livelihood Mission (NRLM) highlight the focus on providing employment opportunities and enhancing income for rural households. Additionally, the substantial increase in funding for the Pradhan Mantri Awas Yojana (PMAY) from ₹34.02 crores in FY25 to ₹339.12 crores in FY26 underscores efforts to improve housing conditions for the rural poor, thereby enhancing their quality of life.

Moreover, the State's investment in social welfare programs, such as the Integrated Child Development Services (ICDS) and the Supplementary Nutrition Programme, reflects a holistic approach to poverty alleviation. These programs aim to address malnutrition and improve health outcomes for children and women, which are critical components of breaking the cycle of poverty. The focus on disaster mitigation and support for vulnerable populations ensures that the most disadvantaged communities are protected and supported, contributing to the overall goal of eradicating poverty.

Expected Outcomes from Investment in Goal 1:

- Increased employment opportunities, boosting household incomes and reducing poverty levels.
- Improved housing conditions, providing safe and affordable housing for rural families.
- Better health and nutrition outcomes for children and women through targeted social welfare programs.
- Enhanced social stability by empowering rural communities with sustainable livelihoods and improved living conditions

Budget Allocation 2025-2026

The budget allocation for Goal 1 is ₹ 2106.58 Crores which is 7.02% of the total SDG budget.

Goal	Budget 2024-25 (In Crores)	Estimates Revised Estimates 2024-25 (In Crores)	Budget 2025-26 (In Crores)
1	1495.70	1495.70	2106.58

Community and Rural Development Department is the top contributor to the budget for Goal 1, followed by Social Welfare Department and Planning Department.



Goal 2: Zero Hunger

Objective: To achieve food security and improved nutrition for all citizens of Meghalaya through the promotion of sustainable agriculture practices, with a particular focus on empowering small-scale farmers and fostering integrated rural development.

The State budget's allocation to Goal 2 stresses strengthening agricultural capacity and the State's farmers. Significant investments in agricultural development and food security programs are evident, with substantial allocations to initiatives such as the Farmer's Collectivisation for Upscaling of Production and Marketing Systems (FOCUS) Programme, which sees an increase from ₹100 crores in FY25 to ₹175 crores in FY26. This program aims to enhance agricultural productivity and market access for farmers, thereby improving food availability and affordability.

Moreover, the State's focus on sustainable agricultural practices is highlighted by the increased funding for Agro Forestry, which receives ₹84.13 crores in FY26, and Mission Organic, which sees a rise from ₹30 crores in FY25 to ₹58.38 crores in FY26. These investments are designed to promote environmentally friendly farming techniques and organic agriculture, contributing to long-term food security and environmental sustainability. The allocation for the Expenditure on Intra-State Movement & Handling of Food Grains under the National Food Security Act also increases to ₹48.95 crores in FY26, ensuring efficient distribution and access to food supplies. Overall, these strategic investments are expected to enhance agricultural productivity, improve nutrition, and ensure food security for the State's population.

Expected Outcomes:

- Enhanced agricultural productivity leading to increased food security and reduced hunger.
- Greater adoption of sustainable farming practices, promoting environmental sustainability and resilience.
- Improved nutrition and health outcomes for children and women through targeted social welfare programs.
- Strengthened rural economies through increased employment opportunities and market access for farmers

Budget Allocation 2025-2026

The budget allocation for Goal 2 is ₹1462.06 Crores which is 4.87% of the total SDG budget.

Goal	Budget Estimates 2024-25 (In Crores)	Revised Estimates 2024-25 (In Crores)	Budget Estimates 2025-26 (In Crores)
2	1092.52	1092.52	1462.06

The top contributor to Goal 2 is Agriculture and Farmers Welfare Department, followed by Social Welfare and Planning.

Goal 3: Good Health and Well-being

Objective: To ensure healthy lives and promote well-being for all at all ages. This goal aims to address a wide range of health priorities, including reducing maternal and child mortality, combating communicable diseases like AIDS, tuberculosis, and malaria, and reducing

The State budget’s allocation to Goal 3 emphasizes enhancing healthcare infrastructure and services to ensure good health and well-being for all citizens. Significant investments in healthcare infrastructure and services are evident, with substantial allocations to the National Health Mission (NHM), which receives ₹446 crores in FY26. This funding aims to enhance primary healthcare facilities, improve access to medical services, and strengthen health systems across the State. Additionally, the Meghalaya Health Insurance Scheme, with an allocation of ₹180 crores in FY26, is designed to provide financial protection against health-related expenses, ensuring that more citizens can access quality healthcare without facing financial hardship.

Moreover, the State's focus on upgrading healthcare facilities is highlighted by the increased funding for the upgradation of Primary Health Centres to 30-bedded hospitals and the establishment of new medical colleges and teaching hospitals. These initiatives are expected to improve the availability and quality of healthcare services, particularly in rural and underserved areas. Investments in specific programs, such as the Meghalaya Health Systems Strengthening project further underscore the State's commitment to enhancing healthcare delivery and ensuring the availability of essential medicines. Overall, these strategic investments are anticipated to lead to better health outcomes, reduced disease burden, and improved well-being for the State's population.

Expected Outcomes:

- i. Improved maternal and child health indicators.
- ii. Easier access to healthcare in remote locations.
- iii. Cohesive management of patient and infrastructure information.
- iv. Enhanced availability of essential medicines and medical supplies.
- v. Increased financial protection against health-related expenses

Budget Allocation 2025-2026

The budget allocation for Goal 3 is ₹2436.19 Crores which is 8.11% of the total SDG budget.

Goal	Budget Estimates 2024-25 (In Crores)	Revised Estimates 2024-25 (In Crores)	Budget Estimates 2025-26 (In Crores)
3	1536.27	1536.27	2436.19

The top contributor to Goal 3 is Family and Health Services Department followed by Social Welfare Department and Sports and Youth Affairs

Goal 4: Quality Education

Objective: To expand access to quality education for all children and youth in Meghalaya by investing in infrastructure, teacher training, and culturally relevant curricula that meet the diverse needs of the State.

The State budget’s allocation to Goal 4 emphasizes enhancing educational infrastructure and services to ensure quality education for all. Notable investments are directed towards various educational programs and infrastructure development to ensure inclusive and equitable quality education for all. The allocation to Samagra Shiksha Abhiyan (SSA) with ₹604.76 crores in FY26 highlights the State's focus on universalizing elementary education. Additionally, substantial funding is allocated to the maintenance and improvement of primary and secondary schools, both under deficit and non-deficit systems, ensuring that educational facilities are well-maintained and equipped to provide a conducive learning environment.

Moreover, the State's budget emphasizes the importance of higher education and technical training. Investments in setting up technical universities, new polytechnics, and the National Law University in Shillong reflect the State's commitment to expanding access to higher education and specialized training. The allocation for post-matric scholarships for Scheduled Tribes and other merit-based scholarships aims to support students from marginalized communities, ensuring that financial constraints do not hinder their educational aspirations. Overall, these strategic investments are expected to enhance the quality of education, improve educational outcomes, and promote lifelong learning opportunities for all citizens.

Expected Outcomes:

- i. Increased enrolment in educational institutions through better infrastructure.
- ii. Development of competent individuals suitable for the dynamic markets.
- iii. Availability of trained teachers for improved education delivery at all levels.
- iv. Improvement in overall human capital index

Budget Allocation 2025-26

The budget allocation for Goal 4 is ₹3719.86 Crores which is 22.83% of the total SDG budget.

Goal	Budget Estimates 2024-25 (In Crores)	Revised Estimates 2024-25 (In Crores)	Budget Estimates 2025-26 (In Crores)
4	2851.78	2851.78	3677.60

The Education Department is the most significant contributor to Goal 4, followed by the Art and Culture Department.

Goal 5: Gender Equality

Objective: To expand access to quality education for all children and youth in Meghalaya by investing in infrastructure, teacher training, and culturally relevant curricula that meet the diverse needs of the State.

The State budget’s allocation to Goal 5 emphasizes promoting gender equality and empowering women across various sectors. Significant investments are directed towards various programs and initiatives aimed at empowering women and ensuring gender equality. Substantial funding is allocated to the construction of shelter homes for women affected by domestic violence in Shillong and Tura, ensuring that women have access to safe spaces and support services.

Moreover, the State's budget emphasizes the importance of supporting women's economic empowerment through initiatives such as construction works under the handloom and sericulture sectors, and training centers for women and care of their children. Investments in programs like Beti Bachao Beti Padhao and the Hub for Empowerment of Women reflect the State's commitment to addressing gender disparities and promoting women's rights. The allocation for payment of compensation to rape victims and other victims of severe mental agony underscores the State's dedication to providing justice and support to survivors. Overall, these strategic investments are expected to enhance gender equality, empower women economically and socially, and create a more inclusive and equitable society.

Expected Outcomes:

- i. Efficient implementation of policy safeguards leading to reduction in gender-based violence and discrimination.
- ii. Increased participation of women in socio-political affairs.
- iii. Recognition of women as engaged in dignified labour.
- iv. Enhanced economic empowerment and financial independence for women.
- v. Improved access to support services and safe spaces for women affected by violence.

Budget Allocation 2025-26

The budget allocation for Goal 5 is ₹135.66 Crores which is 0.45% of the total SDG budget.

Goal	Budget Estimates 2024-25 (In Crores)	Revised Estimates 2024-25 (In Crores)	Budget Estimates 2025-26 (In Crores)
5	87.08	87.08	135.66

The highest allocation for Goal 5 comes from the Planning Department, followed by the Social Welfare department.

Goal 6: Clean Water and Sanitation

Objective: To achieve universal access to safe and affordable drinking water and sanitation for all communities in Meghalaya by investing in sustainable infrastructure, integrated water resource management, and innovative wastewater treatment solutions.

The State budget’s allocation to Goal 6 emphasizes ensuring access to clean water and improved sanitation facilities for all citizens. Significant investments are directed towards various water supply and sanitation programs to ensure access to clean water and improved sanitation facilities for all citizens. The allocation to the National Rural Drinking Water Programme (Jal Jeevan Mission) with ₹250 crores in FY26 highlights the State's focus on providing safe and reliable drinking water to rural areas. Additionally, substantial funding is allocated to the Central Rural Sanitation Programme (Swachh Bharat) with ₹165.99 crores in FY26, aiming to improve sanitation infrastructure and promote hygiene practices in rural communities.

Moreover, the State's budget emphasizes the importance of maintaining and upgrading existing water supply schemes. Investments in the repair and maintenance of rural and urban water supply schemes across Khasi Hills, Garo Hills, and Jaintia Hills ensure that water infrastructure remains functional and efficient. The allocation for the Greater Ampati Water Supply Project and the New Shillong Water Supply Project reflects the State's commitment to expanding access to clean water in both urban and rural areas. Overall, these strategic investments are expected to enhance water security, improve sanitation facilities, and promote better health outcomes for the State's population.

Expected Outcomes:

- i. Improved access to clean and safe drinking water for rural and urban populations.
- ii. Enhanced sanitation infrastructure leading to better hygiene practices.
- iii. Reduced incidence of waterborne diseases and improved public health.
- iv. Sustainable management and maintenance of water supply systems.
- v. Increased community awareness and participation in water conservation and sanitation initiatives.

Budget Allocation 2025-26:

The budget allocation for Goal 6 is ₹1403.09 Crores which is 4.67% of the total SDG budget.

Goal	Budget Estimates 2024-25 (In Crores)	Revised Estimates 2024-25 (In Crores)	Budget Estimates 2025-26 (In Crores)
6	917.93	917.93	1403.09

The highest allocation for Goal 6 comes from the Public Health Engineering Department, followed by Water Resources Department and Social Welfare.



Goal 7: Affordable and Clean Energy

Objective: To accelerate Meghalaya's transition to a clean energy future by significantly increasing the share of renewable energy in the energy mix, expanding access to affordable and reliable energy services for all communities, and promoting the adoption of clean

The State budget’s allocation to Goal 7 focuses on providing affordable, reliable, sustainable, and modern energy access for all citizens. Significant investments are directed towards various energy projects and initiatives to ensure access to affordable, reliable, sustainable, and modern energy for all citizens. The allocation to the MeECL with ₹860 crores in FY26 highlights the State's focus on improving the operational and financial turnaround of power distribution company (MePDCL) and providing reliable and quality power to the people of Meghalya. Additionally, substantial funding is allocated to the Meghalaya Power Sector Improvement Project under Asian Development Bank (ADB) funding with ₹200 crores in FY26, aiming to enhance the overall efficiency and reliability of the power sector.

Moreover, the State's budget emphasizes the importance of upgrading and expanding energy infrastructure. Investments in the construction of transmission lines and substations, the Dam Rehabilitation and Improvement Project (DRIP), and the replacement of distribution transformers ensure that the energy infrastructure remains robust and capable of meeting the growing demand for electricity. The allocation for street lighting systems reflects the State's commitment to promoting energy efficiency and reducing energy consumption. Overall, these strategic investments are expected to enhance energy security, promote sustainable energy practices, and improve access to affordable and clean energy for all citizens.

Expected Outcomes:

- i. Increase in power distribution capacity of the State.
- ii. Availability of energy solutions including greener alternatives.
- iii. Reduction in technical and commercial losses.
- iv. Enhanced reliability and efficiency of the power sector.
- v. Improved access to affordable and clean energy for all citizens.

Budget Allocation 2025-26

The budget allocation for Goal 7 is ₹1386.59 Crores which is 4.62% of the total SDG budget.

Goal	Budget Estimates 2024-25 (In Crores)	Revised Estimates 2024-25 (In Crores)	Budget Estimates 2025-26 (In Crores)
7	1043.29	1043.29	1386.59

The allocation for Goal 7 comes from the Power Department.

Goal 8: Decent Work and Economic Growth

Objective: To foster sustainable and inclusive economic growth in Meghalaya that creates quality jobs and improves livelihoods for all, particularly for youth and women, through strategic investments in infrastructure development, skills enhancement, and entrepreneurship promotion.

The State's expenditure plan for the upcoming year demonstrates a strong commitment to achieving Goal 8. Significant investments are directed towards various projects and initiatives aimed at promoting sustainable economic growth, productive employment, and decent work for all citizens. The allocation to the Meghalaya Eco-Tourism Infrastructure Development Project (MEIDP) with ₹190 crores in FY26 highlights the State's focus on developing eco-tourism infrastructure, which is expected to create job opportunities and boost local economies. Additionally, substantial funding is allocated to Supporting Human Capital Phase II with ₹150 crores in FY26, aiming to enhance human capital development and improve employability.

Moreover, the State's budget emphasizes the importance of skill development and entrepreneurship. Investments in programs like the Deen Dayal Upadhyaya Grameen Kaushalya Yojana, the Meghalaya Programme for Adolescent Wellbeing, Employment and Resilience (MPOWER), and the Start-up Village Entrepreneurship Programme reflect the State's commitment to providing skill training and promoting entrepreneurship among youth. The allocation for the Sustainable Tourism Enhancement for Livelihood (STEFLI) project and the Eco Tourism Development for Empowering Rural Youth underscores the State's dedication to leveraging tourism as a means of economic growth and employment generation. Overall, these strategic investments are expected to foster economic growth, create decent work opportunities, and enhance the overall well-being of the State's population.

Expected Outcomes:

- Enhanced employability and skill development among youth through targeted training programs.
- Increased entrepreneurship and support for start-ups, fostering innovation and economic growth.
- Sustainable economic growth driven by investments in human capital and tourism.
- Improved livelihoods and economic resilience for the State's population.

Budget Allocation 2025-26

The budget allocation for Goal 8 is ₹1157.64 Crores which is 3.85% of the total SDG budget.

Goal	Budget Estimates 2024-25 (In Crores)	Revised Estimates 2024-25 (In Crores)	Budget Estimates 2025-26 (In Crores)
8	746.22	746.22	1157.64

The top contributor to SDG 8 is the Planning Department, followed by Finance and Labour Department.

Goal 9: Industry, Innovation and Infrastructure

Objective: To promote inclusive and sustainable industrial development in Meghalaya that generates employment opportunities, enhances productivity, and fosters innovation, with a particular focus on supporting small and medium-sized enterprises (SMEs) and promoting environmentally sound technologies.

The State budget’s allocation to Goal 9 focuses on building resilient infrastructure, promoting inclusive and sustainable industrialization, and fostering innovation. Significant allocations are directed towards the construction and upgradation of roads, with substantial funds earmarked for the Pradhan Mantri Gram Sadak Yojana (PMGSY) and other road development projects. For instance, the budget for the construction and upgradation of roads increases from ₹440.00 crore in FY25 to ₹450.00 crore in FY26, while the PMGSY allocation rises from ₹430.00 crore to ₹465.00 crore. These investments will enhance connectivity, reduce transportation costs, and improve access to markets, education, and healthcare, thereby fostering economic growth and development in rural areas.

Additionally, the State is investing in various infrastructure projects that support industrialization and innovation. The allocation for the Integrated Transport Development Programme is set at ₹370.00 crore for FY26, which will facilitate the development of integrated transport networks, improving the efficiency of goods movement and reducing logistical bottlenecks. Furthermore, the budget includes funds for the construction of technology parks, building infrastructure, and the creation and expansion of optical fiber networks, with allocations of ₹30.00 crore, ₹150.00 crore, and ₹10.00 crore respectively. These initiatives will promote technological advancements, support the growth of industries, and enhance digital connectivity, contributing to a more innovative and industrialized economy.

Expected Outcomes:

- Enhanced facilities and better connectivity will attract more tourists, boosting revenue and economic growth.
- Infrastructure and industrial projects will generate numerous job opportunities across different sectors.
- Improved digital connectivity and technology parks will foster innovation and encourage startups.
- Better transport and digital networks will facilitate the movement of local products to broader markets, promoting them domestically and internationally.

Budget Allocation 2025-2026:

The budget allocation for Goal 9 is ₹4242.32 Crores which is 14.13% of the total SDG budget.

Goal	Budget Estimates 2024-25 (In Crores)	Revised Estimates 2024-25 (In Crores)	Budget Estimates 2025-26 (In Crores)
9	2815.09	2815.09	4242.32

Department of Public Works has the substantial allocation to Goal 9 followed by Planning Department.



Goal 10: Reduced Inequalities

Objective: To reduce inequality within and among communities in Meghalaya through inclusive policies and programs that promote social and economic empowerment.

The State's expenditure plan for the year demonstrates a strong commitment to supporting Goal 10 which aims to reduce inequality. Significant allocations are directed towards social assistance programs, such as the National Social Assistance Programmes (NSAP) for the elderly, widows, and persons with multiple disabilities. For instance, the budget for NSAP Old Age increases from ₹18.23 crore in FY25 to ₹53.69 crore in FY26, and assistance to widows rises from ₹7.48 crore to ₹7.89 crore. These investments will provide financial support to vulnerable populations, helping to reduce poverty and improve their quality of life.

Additionally, the State is investing in programs that promote inclusive development and support marginalized communities. The allocation for the Border Areas Programme under Border Areas Development is set at ₹56.20 crore for FY26, which will enhance infrastructure and services in border areas, reducing regional disparities. The Rashtriya Gram Swaraj Abhiyan (RGSA) and the Tribal Area Development Programme under Article 275(1) also receive significant funding, with ₹36.67 crore and ₹10.00 crore respectively, aimed at empowering local governance and supporting tribal communities. These initiatives will promote social inclusion, ensure equitable access to resources, and foster sustainable development, thereby contributing to the reduction of inequalities in the State.

Expected Outcomes:

- i. Increased financial assistance will alleviate poverty and improve quality of life.
- ii. Investments will reduce regional disparities and promote inclusive development.
- iii. Strengthened local governance enabling better resource management and decision-making.

Budget Allocation 2024-25

The budget allocation for Goal 10 is ₹285.31 Crores which is 0.95% of the total SDG budget.

Goal	Budget Estimates 2024-25 (In Crores)	Revised Estimates 2024-25 (In Crores)	Budget Estimates 2025-26 (In Crores)
10	202.63	202.63	285.31

Department of Community and Rural Development has the substantial allocation, followed by Department of District Council Affairs.

Goal 11: Sustainable Cities and Communities

Objective: To create sustainable and resilient urban environments in Meghalaya that promote a high quality of life for all residents, through investments in green infrastructure, efficient public transportation, and inclusive urban planning

The State budget’s allocation to Goal 11 focuses on making cities and human settlements inclusive, safe, resilient, and sustainable. Significant allocations are directed towards urban infrastructure development, with substantial funds earmarked for the Smart Cities Mission, which increases from ₹72.00 crore in FY25 to ₹95.87 crore in FY26. This investment will enhance urban living conditions, improve public services, and promote sustainable urbanization. Additionally, the allocation for the Urban Infrastructure Development Fund, set at ₹60.00 crore for FY26, will support the development of essential urban infrastructure, contributing to more efficient and livable cities.

Furthermore, the State is investing in various programs aimed at improving housing and sanitation. The Housing for All (Urban) Mission receives ₹31.00 crore in FY26, ensuring affordable housing for urban residents. The Swachh Bharat Mission (Urban) 2.0 also sees an increase in funding, from ₹20.11 crore in FY25 to ₹25.94 crore in FY26, which will enhance sanitation and waste management in urban areas. Investments in the upgradation of airports, construction of helipads, and development of tourism infrastructure will improve connectivity and boost economic activities in urban centers. These initiatives collectively aim to create more inclusive, safe, resilient, and sustainable urban environments, aligning with the objectives of Goal 11.

Expected Outcomes:

- i. Creation of new job opportunities through investments in urban infrastructure.
- ii. Enhanced living conditions and public services in urban areas.
- iii. Increased affordability and availability of housing for urban residents.
- iv. Improved sanitation and waste management in cities.
- v. Boosted connectivity and economic activities in urban centres

Budget Allocation 2025-26

The budget allocation for Goal 11 is ₹1728.01 Crores which is 5.75% of the total SDG budget.

Goal	Budget Estimates 2024-25 (In Crores)	Revised Estimates 2024-25 (In Crores)	Budget Estimates 2025-26 (In Crores)
11	1165.96	1165.96	1728.01

Urban Development Department has the substantial allocation, followed by Tourism Department.

Goal 12: Responsible Consumption and Production

Objective: To transition Meghalaya towards a circular economy by promoting sustainable consumption and production patterns that minimize waste, conserve resources, and reduce environmental impact, through incentives for adopting green technologies and implementing eco-friendly production processes across all sectors.

The State's expenditure for Goal 12 focuses on ensuring sustainable consumption and production patterns. Significant allocations are directed towards agricultural development and sustainable water management. For instance, the Pradhan Mantri Krishi Sanchai Yojana (PMKSY) receives substantial funding, with ₹118.72 crore allocated for FY26. This investment will enhance irrigation infrastructure, promote efficient water use, and support sustainable agricultural practices. Additionally, funds allocated for the Rashtriya Krishi Vikas Yojana (RKVY) and various NABARD loans for minor irrigation schemes will further bolster agricultural productivity and sustainability.

Moreover, the State is investing in initiatives aimed at resource conservation and environmental sustainability. The allocation for springs conservation and rejuvenation works remains steady at ₹4.75 crore, which will help preserve vital water sources and promote sustainable water management. Investments in water harvesting, bio-resources development, and organic manure production will support eco-friendly agricultural practices and reduce the environmental impact of farming. These initiatives collectively aim to promote sustainable consumption and production patterns, ensuring the efficient use of natural resources and fostering long-term environmental sustainability in the State.

Expected Outcomes:

- Enhanced agricultural productivity through improved irrigation infrastructure and sustainable water management.
- Increased adoption of eco-friendly agricultural practices, reducing environmental impact.
- Improved conservation of water resources through springs conservation and water harvesting initiatives.
- Promotion of organic farming and sustainable production methods.
- Long-term environmental sustainability and efficient use of natural resources.

Budget Allocation 2025-26

The budget allocation for Goal 12 is ₹253.79 Crores which is 0.84% of the total SDG budget.

Goal	Budget Estimates 2024-25 (In Crores)	Revised Estimates 2024-25 (In Crores)	Budget Estimates 2025-26 (In Crores)
12	241.41	241.41	253.79

The significant proportion of the allocation is by the Department of Water Resources.

Goal 13: Climate Action

Objective: To strengthen Meghalaya's resilience to climate change impacts by implementing comprehensive policies and programs that promote both mitigation of greenhouse gas emissions and adaptation to the changing climate, ensuring a sustainable future for all

The State's expenditure for Goal 13 focuses on taking urgent action to combat climate change and its impacts. Significant allocations are directed towards watershed and wasteland development, with the Meghalaya State Watershed & Wasteland Development Agency receiving ₹100.69 crore in FY26. This investment will enhance water conservation, soil health, and land productivity, contributing to climate resilience. Additionally, the Community Forestry Project maintains a substantial allocation of ₹100.00 crore, supporting reforestation and afforestation efforts that will sequester carbon, improve biodiversity, and mitigate climate change impacts.

Moreover, the State is investing in various environmental protection and conservation initiatives. Funding for social forestry, forest protection schemes, and wildlife preservation works will enhance the management and protection of forest resources, ensuring sustainable use and conservation of biodiversity. The allocation for the Meghalaya State Pollution Control Board at ₹11.44 crore will strengthen efforts to monitor and control pollution, contributing to a healthier environment. These initiatives collectively aim to build climate resilience, promote sustainable land and water management, and protect ecosystems, aligning with the objectives of Goal 13 to combat climate change and its impacts.

Expected Outcomes:

- i. Enhanced water conservation and soil health through watershed and wasteland development.
- ii. Increased carbon sequestration and biodiversity through reforestation and afforestation efforts.
- iii. Improved management and protection of forest resources, ensuring sustainable use and conservation.
- iv. Strengthened pollution monitoring and control, contributing to a healthier environment.
- v. Greater climate resilience and sustainable land and water management practices

Budget Allocation 2025-2026:

The budget allocation for Goal 13 is ₹384.98 Crores which is 1.28 % of the total SDG budget.

Goal	Budget Estimates 2024-25 (In Crores)	Revised Estimates 2024-25 (In Crores)	Budget Estimates 2025-26 (In Crores)
13	359.17	359.17	384.98

A significant proportion of the allocation is by the Forest and Environment Department, followed by Planning and Soil and Water Conservation Department.

Goal 15: Life on Land

Objective: To conserve Meghalaya's rich biodiversity and ensure the sustainable use of its terrestrial ecosystems, particularly forests, for the benefit of present and future generations, through the expansion of protected areas, promotion of sustainable land-use practices, and community engagement in conservation efforts.

The State's expenditure for Goal 15 focuses on protecting, restoring, and promoting sustainable use of terrestrial ecosystems, managing forests sustainably, combating desertification, and halting and reversing land degradation and biodiversity loss. Significant allocations are directed towards soil and water conservation, with ₹30.00 crore allocated for Soil and Water Conservation Schemes under NABARD in FY26. This investment will enhance soil health, prevent erosion, and improve water management, contributing to sustainable land use. Additionally, the Pradhan Mantri Krishi Sinchayee Yojna-Watershed Development Component (PMKSY-WDC) receives ₹29.07 crore, supporting watershed management and promoting sustainable agricultural practices.

Moreover, the State is investing in afforestation and wildlife habitat development. The allocation for afforestation increases significantly to ₹22.44 crore in FY26, which will support reforestation efforts, enhance carbon sequestration, and improve biodiversity. The Integrated Development of Wildlife Habitats receives ₹18.34 crore, aimed at protecting and restoring wildlife habitats, ensuring the conservation of biodiversity. These initiatives, along with funding for the protection of vulnerable catchment areas and the establishment of wildlife sanctuaries, will promote the sustainable management of forests and ecosystems, aligning with the objectives of Goal 15 to halt biodiversity loss and ensure the sustainable use of terrestrial resources.

Expected Outcomes:

- i. Enhanced soil health and water management through conservation schemes.
- ii. Reduced soil erosion and improved land productivity.
- iii. Increased forest cover and carbon sequestration through afforestation efforts.
- iv. Improved biodiversity and wildlife habitat protection.
- v. Sustainable management of forests and terrestrial ecosystems

Budget Allocation 2024-2025:

The budget allocation for Goal 15 is ₹303.81 Crores which is 1.01% of the total SDG budget.

Goal	Budget Estimates 2024-25 (In Crores)	Revised Estimates 2024-25 (In Crores)	Budget Estimates 2025-26 (In Crores)
15	241.03	241.03	303.81

The substantial allocation is by Forest Department, followed by Soil and Water Conservation Department.

Goal 16: Peace, Justice and Strong Institutions

Objective: To foster a peaceful and inclusive society in Meghalaya where all individuals enjoy fundamental human rights and have access to fair and impartial justice, through the promotion of the rule of law, strengthening of accountable institutions, and empowerment of marginalized communities

The State's expenditure for Goal 15 focuses on promoting peaceful and inclusive societies, providing access to justice for all, and building effective, accountable institutions at all levels. Significant allocations are directed towards enhancing law enforcement and judicial infrastructure. For instance, the District Executive Police receives ₹496.05 crore in FY26, which will strengthen law enforcement capabilities and improve public safety. Additionally, substantial funds are allocated for the construction and maintenance of police and judicial buildings, including ₹169.10 crore for residential buildings at the new Assembly building at Mawdiangdiang and ₹14.50 crore for administrative buildings for the State police.

Moreover, the State is investing in various initiatives aimed at improving governance and public administration. Funding for the Secretariat Establishment, State Special Branch, and State Police Wireless Organisation will enhance administrative efficiency and coordination among government departments. The allocation for the National Law University Shillong at ₹15.50 crore will support legal education and research, contributing to a more informed and capable judiciary. Additionally, investments in the Directorate of Forensic Science and the creation of specialized police battalions will enhance investigative capabilities and ensure better law enforcement. These initiatives collectively aim to build effective, accountable, and inclusive institutions, promoting peace, justice, and strong institutions in alignment with the objectives of Goal 16.

Expected Outcomes:

- Strengthened law enforcement capabilities and improved public safety.
- Enhanced infrastructure for police and judicial institutions, ensuring effective operations.
- Improved administrative efficiency and coordination among government departments.
- Better legal education and research, contributing to a more informed judiciary.
- Enhanced investigative capabilities and law enforcement through specialized police battalions and forensic science

Budget Allocation 2024-2025:

The budget allocation for Goal 16 is ₹2579.23 Crores which is 8.59% of the total SDG budget.

Goal	Budget Estimates 2024-25 (In Crores)	Revised Estimates 2024-25 (In Crores)	Budget Estimates 2025-26 (In Crores)
16	2411.73	2411.73	2579.23

The substantial allocation is by the Department of Civil Police, followed by Parliamentary Affairs.

4 Way Forward

Meghalaya is accelerating its development, aiming for top 10 SDG performance by 2030, by building upon its natural resources and fostering strategic partnerships. To ensure inclusive growth, the State will prioritize development in its peripheral regions, employing tailored solutions that respect local cultures and needs. This involves a blend of top-down frameworks and grassroots adaptability, alongside granular monitoring via Block and Local Indicator Frameworks. Furthermore, the commitments of "Mission 10" will be integrated into all development plans, to achieve measurable improvements on key developmental indicators.

To maintain momentum, Meghalaya will focus on detailed, localized monitoring, and strengthen inter-departmental collaboration. Regular meetings will ensure convergence towards time-bound targets and enable real-time problem solving. Resource allocation, including the doubled Catalytic Fund, will be aligned with both SDG and Mission 10 goals. This will promote community ownership and enhance the effectiveness of development initiatives.

Meghalaya's growth strategy remains centred on six pillars: human development, infrastructure, primary economic sectors, entrepreneurship, environment, and governance. The State will leverage partnerships and technological innovations to drive holistic socio-economic progress and build resilience into its SDG programming. This integrated approach, with strong inter departmental cooperation, will help Meghalaya to achieve its development goals.



Annexure

SDG 1: No Poverty

Sl.No.	Scheme Name	AG 2023-24	BE 2024-25	BE 2025-26
1	Affordable Housing Scheme	93.23	70	70
2	Assistance to Voluntary Organisation of Youth Welfare Affairs	0	0.02	0.02
3	Assistant Director (Dairy Tura Previously(18)	0.01344	0.0177	0.0182
4	Assistant Director (Dairy) District Level.	0	0.0248	0.025
5	C & R.D. Administration	0.7938074	0.9351	0.6521
6	Cadastral Survey under the Directorate of Land Records and Surveys,etc.	3.2137296	4.1587	4.1707
7	Chief Minister- Elevate	0	0	70
8	Child Helpline	0.3638	0.3638	2
9	Construction of Anganwadi Centre under ICDS Scheme	0	0	51.5
10	Development/ Modernization of Fish Farms (Rural Infrastructure Development Fund)	0	0	0.1
11	Directorate of Community Development- *	4.2888999	4.4759	5.0012
12	Directorate of Land Records	0.8134389	0.7151	0.904
13	District Offices under Community Development:-	0.7064785	0.73	0.777
14	District Social Welfare Officer-	5.5603723	6.0121	7.0227
15	Drawing Section for Surveys	0.2742334	0.2963	0.2963
16	DRDA Administration	9.0549867	9.055	9
17	Establishment in Districts	2.1344745	2.4135	2.584
18	Establishment of a Cell for implementation of Metric System of Land Records	0.1041988	0.1368	0.1368
19	Establishment of Emergency Operation Centre (EOC)	0.0841987	0.23	0.33

Sl.No.	Scheme Name	AG 2023-24	BE 2024-25	BE 2025-26
20	Establishment of Enforcement Branch for identification preparation and execution of Land Reforms	4.0542556	4.2012	4.2012
21	Establishment of Joint Directorate at Tura	0.5137888	0.4737	0.517
22	Establishment of Libraries.	0	0.066	0.066
23	Establishment Of Survey School	1.030868	1.1656	1.1643
24	Expenditure for Chairman/Deputy Chairman/Vice Chairman/ Members of Block Development & Monitoring Committee.	0.231	0	0.231
25	Expenditure relating to the Adviser to the Government of Meghalaya Social Welfare Department	0.031089	0	0.055
26	Extension Training Centre (ETC)	0.25	0.25	0.25
27	Financial Assistance to the Victims of Natural Calamities	0	0.01	0.01
28	General and Controlling Establishment for Surveys-	0.9852259	1.1381	1.1381
29	Headquarters Organisation.-	2.7895877	4.803	5.06
30	Human Resource Support in Disaster Management	1.6427676	2.14	2.65
31	Implementation of National Programme for Rehabilitation of Person with Disabilities	4.7794524	1	4.8
32	Implementation of PWD Act, 1995- Appointment of Commission of Disability Act	0.8080275	1.0647	1.095
33	Indira Gandhi Awas Yojana (IAY)-	83.4464	34.0201	339.12
34	Indira Gandhi Awas Yojana (IAY)-	9.2718223	3.7801	50.24
35	Integrated Child Development Service Schemes Previously (05)	26.8570072	24.0616	31.6554
36	Integrated Child Development Services Scheme	0	20	26
37	Integrated Child Protection Service	7.8811352	32.5215	19
38	Intervention Programmes for Drug Abuse	0.8795552	0.291	6.5125

Sl.No.	Scheme Name	AG 2023-24	BE 2024-25	BE 2025-26
39	Land Reforms and Land Records-Grant to the District Councils	0.69	0.69	0.69
40	Maternity and Child Welfare Schemes-	0.0517449	0.12	0.192
41	Meghalaya Livelihood to Market Project (Megha-Lamp)	0	0	60
42	Meghalaya Society for Social Audit and Transparency.	1.5281	3.069	2.5
43	Meghalaya Society for Social Audit and Transparency.	0.1697888	0.341	0.4445
44	Meghalaya State Disaster Mitigation Fund	0	0	17.8
45	National Creche Scheme for the children of working mother	0	0	1.8
46	National Rural Livelihood Mission	268.7589666	389.07	356.075
47	One Stop CentrePreviously(25)	3.178451	2.9953	1
48	Plantation of Medicinal Plants	0.0569	0.12	0.12
49	Pradhan Mantri Matsya Sampada YojanaPreviously(41)	7.322966	22.9394	18.5
50	Programme Implementation Service	0	0	44
51	Reorganisation of C&Rd Blocks.	0.6552	0.8683	1.4
52	Reproduction Section for Surveys	0.3356251	0.4644	0.4644
53	Rural self Employment Training Institute (RSETIs)	1.0757	5	4.68
54	Services for Children in need of Care and Protection--	0.1998216	0.2172	0.25
55	Shakti Sadan %u2013 Integrated Relief and Rehabilitation Home	0	0	0.87
56	SPECIAL RURAL DEVELOPMENT PROGRAMME (SRWP)	136.25	136.25	136.25
57	Stage II Block-	1.5976	1.9551	2.1249
58	Stage-II Block Offices :-	79.5180173	87.1817	90.2083
59	State Boundary Demarcation and Pillar Construction	0.10875	0.05	0.05

Sl.No.	Scheme Name	AG 2023-24	BE 2024-25	BE 2025-26
60	State Commission for Protection of Child Rights Previously(21)	0.2721	0	1
61	State Institute for Research & Training of Rural Development (SIRD)	2.2942178	0	3
62	Sub-Divisional Organisation Planning	0.1457846	0.1351	0.2091
63	Supplementary Nutrition Programme for Integrated Child Development Service Scheme.-	0	0	14.7
64	Supplementary Nutrition Programme for Integrated Child Development Service Scheme.- Previously(02)	0.64461	0.7721	0.802
65	Supplementary Nutrition Programmes in Urban Areas--	0.1861823	0.2524	0.2718
66	Supply of Agri. MachineriesPreviously(06)	2.235	3	6
67	The National Rural Employment Guarantee.	334.9188271	450	450
68	The National Rural Employment Guarantee.	100.648767	154.17	166.6667
69	Training for self employment of women in need of Care and Protection-	1.8090437	2.0283	2.3377
70	Training on Disaster Mangement.	0.2560202	0	0.43
71	Traverse Section for Survey	3.0782261	3.4401	3.4401

SDG 2: Zero Hunger

Sl.N o.	Scheme Name	AG 2023-24	BE 2024-25	BE 2025-26
1	Farmer's Collectivisation for upscaling of Production and Marketing Systems (FOCUS) Programme	0	100	175
2	Supplementary Nutrition Programme for Integrated Child Development Service Scheme.- Previously(02)	0	130	130
3	Agro Forestry	0	0	84.125
4	Integrated Child Development Service SchemesPreviously(05)	69.0967787	81.5838	77.565
5	Special Central Assistance (Mission Organic) Previously(39)	3.1965	30	58.3791
6	Agricultural Marketing Organisation including subsidy.	6.3882985	6.9004	57.4352
7	Expenditure on Intra-State Movement & handling of Food grains and Fair Price Shop Dealer's Margin, etc under the Scheme - National Food Security Act, 2013	37.4246614	44	48.95
8	Pradhan Mantri Aadi Adarsh Gram Yojana (PMAAGY)	28.423	35.05	34.2945
9	Intergrated Child Development Scheme Enhancement of Honorarium to Anganwadi Workers and HelpersPreviously(15)	0	30	33
10	Floriculture Development	0.5836303	40.5217	31.7394
11	State Aquaculture Mission Previously(36)	0	5.0017	31.2517
12	District Offices-	22.8914285	25.3562	23.3625
13	Rajiv Gandhi Scheme for Empowerment of Adolescent Girls (RGSEAG)-SABLAPreviously(04)	0	21.3339	21.333
14	National Mission on Agricultural Extension & Technology (NMAET)Previously(15)	7.66126	8.5828	20.8935
15	Chief Minister's Special Grant	20	20	20
16	Meghalaya State Promotion Board	0	10	20
17	Construction of Anganwadi Centre under ICDS Scheme	0	8.5	19.2
18	Mission for Integrated Development of Horticulture (MIDH) Horticulture Mission For North East & Himilayan States (HMNEH)	1.2698769	29.382	17.0986
19	Supplementary Nutrition Programme for Integrated Child Development Service Scheme.- Previously(02)	0	10.4444	16.6

Sl.N o.	Scheme Name	AG 2023- 24	BE 2024- 25	BE 2025- 26
20	Consumer Welfare Fund	0	16	16
21	Veterinary Dispensaries Previously(24)	13.102636 7	13.8878	14.8069
22	District Offices (Horticulture)	10.08105 94	10.9626	12.9781
23	Veterinary Dispensary taken from C.D.Blocks	10.38818 86	11.8346	12.0501
24	District Civil Supplies Establishment	10.263732 9	10.8134	12.0407
25	Intensive Cattle Development Project	11.018699 8	11.6962	11.6399
26	District Offices	10.03385 87	10.534	11.2159
27	Construction of Administrative Buildings (Hort)	0	0	10
28	Scheme for establishment of new dispensaries under NABARD Loan . Previously(23)	7.688199 9	10	10
29	Agricultural Engineering(Mechanical)	8.485509 6	9.5821	9.8916
30	Apiculture Mission General Areas during 2022-23	0.2203	0.12	9.586
31	Vegetable Development including Sale of Vegetable seed rates-	5.369599 2	5.4942	9.2999
32	Development in Horticulture including Sale of Fruit- etc at Subsidised Rates-	8.453574 4	8.6298	9.2714
33	Construction of Headquarter Office & Other buildings under Directorate of Dairy Development	0	7.931	8.19
34	District Office	7.5702613	8.7261	8.1392
35	Directorate of Agriculture.	6.089626 3	6.7036	7.7614
36	Fruits Development	6.549853	3.0262	7.6784
37	Pradhan Mantri Krishi Yojana Krishi Sinchayee Yojana (PMKSY)	0	7.6	7.6
38	Development and Maintenance of Orchard-Cum-Horticulture Nurseries	5.1155343	5.2807	7.3953

Sl.N o.	Scheme Name	AG 2023- 24	BE 2024- 25	BE 2025- 26
39	Veterinary Aid Centres	6.569773 1	7.3862	7.0904
40	Corpus Fund on Crop Insurance(RKBY)	4.8751535	0.12	7.07
41	Meghalaya Farmer's Commission	6.816681	1.7588	6.6959
42	Central Assistance for CSSPreviously(03)	0.9531149	2.085	6.514
43	Interest Subvention Scheme under Kisan Credit Card (KCC)	4.156206 4	4.28	6.02
44	Meghalaya Programme for Adolescent Wellbeing, Employment and Resilience (MPOWER)	0	10	6
45	Central Dairy Khasi/Tura/Jowai	4.284177 6	4.5393	5.5233
46	Assistance for Directorate of Food Processing	0	0	5.5
47	Directorate Office.--	4.555601 9	4.997	5.2951
48	Mobile Veterinary Dispensary	4.807386 9	4.8904	5.2005
49	Directorate of Animal Husbandry and Veterinary	4.338081 4	5.0137	5.0421
50	Smart Village Project	0	5	5
51	Land Reclamation Scheme(Including Subsidy on Hire	4.850402 6	5.3192	4.9793
52	National Mission for Sustainable Agriculture (NMSA)Previously(49)	0	3.3271	4.8547
53	Agricultural Research Stations and Laboratories	4.277999 7	5.0551	4.417
54	Project under Ministry of Tribal Affairs (MoTA)Previously(06)	0	1	4.35
55	National Food Security Mission (NFSM)Previously(07)	1.18373	6.6142	4.11
56	Upgradation of construction of Anganwadi Centre under ICDS Scheme-Central Assistance for C.S.S in respect of ICDS	0	4.5	4.099
57	Construction and Maintenance of Departmental Residential Buildings-Previously(01)	0	4	4
58	Integrated Child Protection Service	6.3419911	4	4
59	Special Central Assistance to Tribal Sub-Schemes (SCA to TSS)Previously(39)	0	4	4

Sl.N o.	Scheme Name	AG 2023-24	BE 2024-25	BE 2025-26
60	Maintenance of Horti-Hubs Previously(36)	3.2406655	3.3426	3.9239
61	Construction	0	4.1095	3.9056
62	Basic Agriculture Training Centre	2.7388297	3.2344	3.841
63	Implementation of S.N.P under CSS	4.2451	0	3.8
64	State Rice Mission Previously(44)	3.38965	3.3897	3.635
65	Engineering Establishment-	3.2722166	3.373	3.5684
66	Vigilance Unit-	3.3045138	3.5571	3.5014
67	Seeds Farms.	3.473274	3.892	3.4897
68	Integrated Technology Enabled Agri Management (ITEAM)	6.072	3.5838	3.4511
69	Fruit Processing Centre	2.7999819	3.0884	3.1251
70	Potato Development including Sale of Seeds at Subsidised Rate-	2.8282183	3.1124	3.1187
71	Conservation and Legislation for Protection of Fis	2.9866496	3.4035	3.1147
72	Supply Directorate --	2.6240584	2.7272	3.0869
73	Directorate of Horticulture	2.8041023	3.2385	3.022
74	Indo-Danish Project	2.8714377	2.8902	3.0086
75	Creation of Rural Market Hub.Previously(13)	0	3	3
76	Key Village Scheme	2.7887215	2.799	2.9634
77	Construction of Departmental Buildings	0.0210387	2.75	2.9569
78	Rinderpest Surveillance and Containment Vaccination Programme	2.7686466	2.9586	2.9558
79	Farmer's Training Centre	2.8395367	3.1604	2.8953
80	Maize Development through Cluster Approach Previously(34)	0.5	0.5	2.64

SDG 3: Good Health and Well-Being

Sl.No	Scheme Name	AG 2023-24	BE 2024-25	BE 2025-26
1	National Health Mission(NHM)	0	0	446
2	Other existing and new Primary Health Centres with Indoor Facilities.	158.2207926	177.9191	206.69
3	Meghalayan Medical Drugs and Services Ltd.	65	100.0047	196.7466
4	Meghalaya Health Insurance Scheme	0	173.8659	180
5	Meghalaya Health Systems Strengthening project under NHM	0	0	100.426
6	Chief Minister's Social Assistance to the Infirm and Widows	96.86685	100	100
7	Upgradation of Primary Health Centres to 30 Beded Hospitals-	67.2800105	68.0905	75.2075
8	Development of Sport and Games--	27.3228982	10	60
9	Shillong Civil Hospital (including improvement thereof)	49.8219331	51.8877	55.225
10	Rural Family Welfare Sub-Centres	0	41.0839	50.22
11	National Health Mission	28.8333333	38.3956	48.8144
12	Buildings.	23.64	30	40
13	Ganesh Das Hospital (inc improvement threreof)	31.2188932	33.9104	35.875
14	Upgradation of 30 Beded CHC to Hospital.	46.0537926	47.1568	32.1717
15	Establishment of Central Medical Store.	31.4317977	0.05	30
16	Health Directorate-	8.2900172	26.8311	27.337
17	Tura Civil Hospital(including improvement thereof)-	23.3331672	24.9121	27.2759
18	Incentive to Asha and Asha Facilitators	0	0	26.5146
19	Malaria -	21.4373986	22.7825	26.2031
20	Programme Implementation Service	15	0	26
21	Setting up of Medical College and Teaching Hospital Including Hostels and Faculty / Staff Quarters.	2	33	25.01
22	Ayush Services under NHMPreviously(03)	16.5814	50.1	25
23	Other Existing and new Primary Health Centres and Sub-Centres with Indoor Facilities-	18.1657135	18.2904	22.913
24	Other existing and new Dispensaries with or without Indoor Facilities-	20.264925	21.153	22.793
25	Financial Assistance to the Victims of Natural Calamities	2.5	20.01	20.01
26	Buildings	12.795	17	20

Sl.No	Scheme Name	AG 2023-24	BE 2024-25	BE 2025-26
27	National Games 2022	14.4163875	20	20
28	Emergency Health Crisis Previously(23)	8.2622749	18.13	18.13
29	Women & Child Hospital.	16.2865542	14.2885	17.95
30	Pasteur Institute with attached Laboratory Facilities(including improvement thereof)	10.3653868	15.7359	17.137
31	Traning-	14.3585158	16.0745	16.916
32	Establishment of Engineering Wing-	5.3510024	5.8559	16.6358
33	Other existing & new Primary Health Centres & Sub Centres with Indoor Facilities under Basic Minimum Service Programme-	14.0898596	14.2365	15.2104
34	R.P.Chest Hospital (including improvement thereof)-	13.7250694	14.4047	15.17
35	District Family Welfare Bureau-	0	9.1716	13.1615
36	Jowai Civil Hospital(including improvement thereof)	10.9530798	12.0451	13.065
37	District Project on National Cancer Control Programmes.	1.2425744	12.005	12.561
38	District Medical Officer(Civil Surgeon's Offices)-	12.5656224	12.6151	11.8087
39	Contribution toward EMRI 108 (Recurring and Non Recurring)	13.0586	13.0586	11.6595
40	Education-	3.2982743	3.5706	11.0621
41	Setting up of Medical College and Teaching Hospital Including Hostels and Faculty / Staff Quarters.	0	0	10
42	Establishment of T.B. Centres and Isolation Beds	8.2442547	8.7744	9.953
43	Rural Family Welfare Centres-	7.1355957	8.6606	9.0009
44	Assistance to State Sport Council--	7.9918409	7.816	8.816
45	Meghalaya Institute of Mental Health and Neurological Sciences-	7.2061719	7.8637	8.4275
46	District Sport Officer and Staff-	6.7289069	7.2898	8.2551
47	Renovation & Improvement of Pasteur Institute.	0.4319972	4	8
48	Tournament Championship to be Organised Sponsored by Direct Rate and its Subordinate Officer---	7.7133752	10	8
49	Construction of Observation Homes / Children's Home	0	1	7.691
50	Grant for Construction of Working Women's Hostel Previously(11)	1.0401325	5	7
51	Smallpox-	6.1211209	6.5848	6.8632
52	Intervention Programmes for Drug Abuse	3.707858	3.5	6.4875

Sl.No	Scheme Name	AG 2023-24	BE 2024-25	BE 2025-26
53	Other existing and new Primary Health Centres with Indoor Facilities under Basic Minimum Service Programme.	5.3233119	5.6635	6.2424
54	Non Lapsable Central Pool Resources	0	0	6
55	Youth Exchange Programme. Previously(17)	3.6457864	7	5.5
56	Basic Health Services Schemes.	4.2617897	4.7715	5.2
57	Mawkyrwat Civil Hospital (including improvement thereof)	3.8257872	1.7257	5.098
58	Ayush Services under NHM Previously(03)	1.8423778	5.01	5.01
59	Grant under 1st Provision to Article 275(I) of the Constitution	0	5	5
60	Strengthening of State Drug Regulatory System	2.266	2.5	5
61	Establishment of Leprosy Control Unit-	4.451026	4.2913	4.662
62	Directorate of Sport.	3.7518675	3.8134	4.4
63	Mobile Unit/Vehicles/Staff:-	3.9858604	4.1001	4.339
64	Post Partum Programme at District Level. Previously(03)	0	2.746	4.1806
65	Food Inspector Establishment for Prevention and Control of Adulteration	2.3836314	3.4194	4.0266
66	Khelo India	4	4.5	4
67	Maternity and Child Welfare Schemes-	2.6719437	2.8129	3.94
68	State Family Welfare Bureau	2.1969456	3.2618	3.841
69	Public Health Dispensaries-	3.1211322	3.3074	3.5715
70	Cash Incentives for medal winners in different sports discipline.	1.9266217	3.5	3.5

SDG 4: Quality Education

Sl.No	Scheme Name	AG 2023-24	BE 2024-25	BE 2025-26
1	Sarva Shiksha Abhiyan	0	0	604.7575
2	Expenditure on Primary Schools -	498.9139814	556.3273	561.224
3	Expenditure on Maintenance of Primary Schools under Deficit System	357.6058062	361.208	298
4	Expenditure on Colleges under Deficit System	138.3067433	206.3241	212.38
5	Expenditure on Secondary Schools under Deficit System for Girls--	163.6826724	162.5788	166.5
6	Post Matric Scholarship Scheduled Tribes-	85	165	165
7	Recurring Shareable Components	0	150	150
8	Expenditure on U.P. Schools under Non Deficit System	127.9716067	129.8289	136.1254
9	Expenditure on Secondary Schools under Deficit System for Boys--	115.8855183	115.8547	122
10	Expenditure on M.E. Schools under Deficit System	80.6871892	81.0007	86.6313
11	Secondary Schools for Boys--	66.9432527	70.9619	74.2066
12	Expenditure on Non Deficit Secondary Schools for Girls--	71.9749751	61.4111	73.0488
13	Setting up of Technical Universities.	0.294116	8.78	71.11
14	Construction Of Educational Building	45.4271769	66	70
15	Expenditure on College under Non Deficit System--	49.9722527	62.9414	70
16	Government College.	46.3642818	65.9304	67.147
17	Expenditure on Schools under Non Deficit System.--	63.80826	63.9276	67
18	Intervention for Education Facility/Improvement	0	1	50
19	Rashtriya Madhyamik Shiksha Abhiyan	0	0	47.7542
20	Government M.E. School	35.1826607	41.4735	43.4825
21	Construction of Secondary Education Building	0	40	40

Sl.No	Scheme Name	AG 2023-24	BE 2024-25	BE 2025-26
22	Meghalaya Board of School Education	18.4521	19.4521	26.8
23	Establishment of new Polytechnics in Ri-Bhoi , West Khasi Hills and South Garo Hills Districts %u2013 SPA	4.942196	10	24.5047
24	Improvement Facilities for teaching of Science in High Schools	25.4600501	23.388	24.0549
25	Secondary Schools for Girls.	18.0577578	19.4438	21.612
26	DIET - Central Assistance for CSSPreviously(30)	15.985207	17.0742	20.925
27	State Merit	0.00168	10	20
28	Teachers Education	0	0	19.9063
29	Special Schools--	20.9548123	22.6161	19.88
30	Post Matric Scholarship Scheduled Tribes-	0	0	16.5
31	Shillong Polytechnic-	9.3147028	13.4322	16.15
32	Expenditure on Non Deficit Secondary Schools for Boys--	17.514038	16.7856	15.6548
33	Construction of Directorate Buildings	0	0	13.8916
34	Deputy Inspectors of Schools and Staff-	11.6578152	14.2288	13.651
35	Recurring Non-Shareable Components	0	13	13
36	Pradhan Mantri Schools for Rising India (PM-SHRI)	2.38767	40.0903	12.8063
37	National Law University Shillong	10	8	12.5
38	Infrastructure Development under SPA/SCA etc Previously(06)	6	10	11.6037
39	Inspectors of Schools and Staff--	9.5562705	10.029	10.124
40	Expenditure on Pre Primary (Nursery) Schools---	8.885154	8.887	9.3658
41	Non-Recurring Shareable Components	0	7.5	9.2177
42	Directorate (SCERT) Previously(01)	4.9805399	6.0394	7.0495
43	Meghalaya Aided Schools Employees Death Cum Retirement GratuitiesPreviously(32)	5.6432465	5.6782	7
44	Rashtriya Uchchatar Shiksha Abhiyan (RUSA) Central Assistance under CSS inclusive State Share	0	14.84	6.84
45	District Social Education Officer and Staff-	6.3255577	6.1764	6.0636
46	New India Literacy Programme	0.2213	5.7	6
47	D.I.E.TPreviously(27)	4.3071285	4.8837	5.4275
48	National Cadet Corps Unit Offices	4.5613239	5.0452	5.22

Sl.No	Scheme Name	AG 2023-24	BE 2024-25	BE 2025-26
49	Construction of Secondary Education Buildings, Govt. Special Schools i.e. Shillong,Tura,Jowai Public and Pine Mount School Shillong	5	5	5
50	Package Scheme for Inventive Large and Medium	1	5	5
51	Upgradation of Existing Educational Infrastructure/ Setting up of Residential School in the Pattern of Navodaya Vidyalaya.	0	5	5
52	Upgradation of Existing Educational Infrastructure-Setting of Residential School in the Pattern of Navodaya Vidyalaya	0	0	5
53	Upgradation of Existing/ Setting up New Polytechnics.Previously(14)	0	5	5
54	Jowai Polytechnics Previously(10)	4.1284961	4.6991	4.84
55	Tura Polytechnics Previously(11)	4.1242522	3.9899	4.6
56	Promotion of Hindi in Non Government Schools for Boys and Girls.	4.6703826	4.1787	4.1004
57	Head Quarter-	3.1682122	3.4867	3.5027
58	District Adult Education Officer and Staff	2.4128848	3.2287	3.362
59	Headquarter	2.3826904	3.4001	3.235
60	Head Quarter	2.6272694	2.9477	3.05
61	Meghalaya Aided Schools Employees Death Cum Retirement Gratuities.Previously(37)	2.8152322	2.8338	2.9
62	B.Ed Government College,Tura-	2.1209526	2.4848	2.64
63	Career Guidance and Counselling Scheme	0.625	3	2.5
64	Institute of Culture-	1.5904773	1.8434	2.3208
65	Non Lapsable Central Pool of Resources.Previously(36)	0	1.7258	2.3102
66	Administrator Primary Education Garo Hills	1.3557667	1.95	2.145
67	Directorate	1.6175963	1.8851	2.1399
68	Shillong Government College of Engineering	0	7.21	2.05
69	Boys Scouts and Girls Guides	2.1960969	1.6518	2.0345
70	Assistance under Article 275 (I)- Administrative expenses	0	0	2

SDG 5: Gender Equality

Sl.N o.	Scheme Name	AG 2023-24	BE 2024-25	BE 2025-26
1	Implementation of the scheme Meghalayan Age Limited	0	60	100
2	Construction Works under Handloom Sector	0	1.5	7
3	Spices Development (Ginger/Turmeric/Large Cardamon/ Black Pepper)	3.0759038	5.4122	5.4923
4	Payment of Compensation to Rape victims, loss or injury causing severe mental agony to women & Child victims in cases such as human trafficking, kidnapping etc. Previously(15)	2	5	5
5	Hub for Empowerment of Women	4.94875	4.1826	3.08
6	Construction Works under Sericulture Sector	0	1.06	3
7	Construction of Shelter Home for women affected with Domestic Violent at Shillong and Tura	0	2	2
8	Meghalaya State Commission for Women Previously(07)	0.7776456	1.585	1.45
9	Beti Bachao Beti Padhao	0	0	1.2
10	North Eastern Region - Textile Promotion Scheme Previously(08)	0	1.1	1.1
11	Assistance to Voluntary Organisation for setting up Training Centres for Women and Care of their Children.--	0.63143	0.65	1
12	Implementation of Domestic Violence Act-Establishment of Shelter Home	0	1	1
13	Grant in Aids to Voluntary Organisation working in the field of Child Welfare-	0.32682	0.6	0.93
14	Grant for Working Women's Hostel	0.0001	0.5	0.8
15	National Plan of Action on Women's Policy and Empowerment- Previously(06)	0	0.8	0.8
16	Grant to Voluntary Organisation	0.4485	0.52	0.52
17	Integrated Child Protection Service	0.9084473	0.32	0.42
18	Training for self employment of women in need of Care and Protection-	0.2827176	0.246	0.3195
19	Establishment of State Human Rights Commission	0.2168177	0.4	0.3
20	Integrated Child Protection Service.	2.34144	0.1	0.15
21	Exgratia Payment to the next of Kin of CPMF/State Police/Home Guard Personel etc. Previously(12)	0.04	0.1	0.1

SDG 6: Clean Water and Sanitation

Sl.No.	Scheme Name	AG 2023-24	BE 2024-25	BE 2025-26
1	Each Schemes (Khasi) Previously(01)	12.4731946	27.48	290
2	National Rural Drinking Water Programme (NRDWP)Previously(18)	0	125	250
3	Central Rural Sanitation Programme	0	25	165.988
4	Divisional and Subordinate Offices.	109.5316649	121.5438	156.9559
5	Repair and Maintenance of Rural Water Supply Schemes (Khasi Hills)	81.6182758	80.9604	92.5
6	Repairs and Maintenance of Urban Water Supply Scheme (Khasi Hills)	58.0972728	63.365	73.005
7	Each Scheme	63.0251833	221.86	55
8	Repair and Maintenance of Rural Water Supply Schemes (Garo Hills)	41.0632391	41.95	51
9	Each Scheme (Garo) Previously(03)	1	3	45.6
10	Repair and Maintenance of Rural Water Supply Schemes (Jaintia Hills)	29.2080171	29.8733	34.95
11	Greater Ampati Water Supply Project (SPA) Previously(17)	0	16.01	25
12	Establishment of Irrigation Wing-	19.3367678	20.9101	21.3792
13	Strengthening of Surface Water-Minor Irrigation or (Investigation Division)	18.5729585	19.4407	18.9513
14	Repairs and Maintenance of Urban Water Supply Scheme (Jaintia Hills)	11.2244575	12.775	17.905
15	Repair and Maintenance of Urban Water Supply Schemes (Garo Hills)	9.0481649	10.975	14.11
16	Loans from NABARD(RIDF) Previously(06)	41.9999478	42.46	12
17	Chief Public Health Engineer and his Establishment. *	8.1091958	8.7408	9.784
18	Additional Chief Engineer,Superintending Engineer and Executive Engineer Establishment.	5.7074604	6.5566	9.779
19	Establishment of Division and Sub-Division(Minor I Works)	8.6354262	9.6932	9.137
20	Each Schemes.(Jowai) Previously(02)	1.8124799	3	6
21	Construction of Departmental non residential building	0	3	5.5
22	Superintending Engineer Rural Circle and Establishment.	3.4409815	3.8579	5.4613
23	Work Charge Establishment	2.8677923	3.55	4.092
24	Central Rural Sanitation Programme	0	0	3.9
25	Each Schemes. Previously(01)	0.1739	2	3.5
26	New Shillong Water Supply Project (SPA)	0	2.5	3
27	State Water Informatic Centre (SWIC)	0	0	2.6062

Sl.No.	Scheme Name	AG 2023-24	BE 2024-25	BE 2025-26
28	Superintending Engineer Greater Shillong Circle and his Establishment.	1.2880327	1.4747	2.375
29	Establishment of Human Resource Development (HRD) Cell	0.9126595	1.1117	2.318
30	Water Resources Development Agency	1.8216	2.3	2.3
31	Flood Management & River Training Works	0.5	1.345	1.56
32	Repair and Maintenance of Departmental Non Residential building (Khasi Hills)	0.4544	1.145	1.26
33	Other Maintenance Expenditure	0.3699965	1.05	1.2
34	Construction and Maintenance of Departmental buildings	0.4979	0.69	0.8
35	Repairs/Maintenance of Department Non Residential Building (Garo Hills)	0.2945	0.645	0.665
36	Establishment of Monitoring Cell Previously(05)	0.2064568	0.2205	0.6084
37	Headquarters Establishments	0.3968753	0.446	0.5808
38	Rural Pipe Water Supply Programme	0.2725	0.4	0.5
39	Other maintenance expenditure	0.02448	0.337	0.388
40	Establishment of Public Health Laboratory.	0.1083288	0.2519	0.3568
41	Establishment of Sanitation Cell.	0.2096962	0.2523	0.287
42	Survey and Investigation	0.092	0.135	0.16
43	Establishment of Investigation Unit.	0	0.1355	0.14
44	Acquisition and Maintenance of Machinery, Equipment, Tools and Plants.	0	0.2198	0.1115
45	Repairs & Maintenance of Department Non Residential Building (Jaintia Hills)	0.045	0.1	0.11
46	Water Quality Management in Water Resources.	0	0.01	0.1042
47	Survey & Investigation	0	0.0565	0.066
48	Promotion of Water Efficiency	0	0.012	0.034
49	Swachhata Action Plan (SAP)	0	0.015	0.02
50	Investigation and Development of Ground Water Resources/Jal Kranti Abhiyan	0	0.006	0.009
51	Minimum needs Seminar Training.	0	0.009	0.007
52	Training of Engineers, Subordinate and other Technical Personnel.	0	0.008	0.007
53	Clean Locality Award-Rural	0	0.019	0.006
54	Other Rural Water Supply Programmes	0	0.03	0.004
55	R and C of P etc.	0	0.0075	0.0035

SDG 7: Affordable and Clean Energy

Sl.No.	Scheme Name	AG 2023-24	BE 2024-25	BE 2025-26
1	Ujwal Discom Assurance Yojana (UDAY) for Operational and Financial Turnaround of Power Distribution Companies (Equity).	730	400	561
2	Ujwal Discom Assurance Yojana (UDAY) for Operational and Financial Turnaround of Power Distribution Companies.	220.06	450	300
3	Meghalaya Power Sector Improvement Project under Asian Development Bank (ADB) funding	0	0	200
4	Construction of Transmission lines and substations	0	0	80
5	Dam Rehabilitation and Improvement Project (DRIP)	0	0	70
6	Street Lighting System	1.9977792	1	50
7	Share of Capital Contribution	0	45	45
8	State Share CSSPreviously(73)	0	120.43	45
9	Construction of Riangdo SHP(3x1000)KWPreviously(72)	0	13	13
10	Replacement of Distribution Transformers	0	4.7144	10
11	Administrative Expenses.	0	3.365	3.365
12	Assistance to Meghalaya State Electricity Regulatory Commission(MSERC).	2.3131	2.2931	2.8484
13	Inspectorate of Electricity --	1.6833568	1.7727	2.095
14	State share for NECPPreviously(74)	0	0.189	2
15	State Dam Safety Cell.	0.6463	0	0.66
16	Zonal Offices.	0.5308399	0.5963	0.652
17	Survey and Investigation	2.050068	0.46	0.506
18	State Energy Conservation	0	0.45	0.45
19	Licensing Board --	0.02104	0.017	0.017

SDG 8: Decent work and Economic Growth

Sl.N o.	Scheme Name	AG 2023-24	BE 2024-25	BE 2025-26
1	Meghalaya Eco-Tourism Infrastructure Development Project (MEIDP)	0	0	190
2	Supporting Human Capital Phase II which will be administered by Planning Department	4	30	150
3	Scheme for Contribution & Administration of Consolidated Sinking Fund	0	98	127
4	Modernization, Renovation and Up gradation of Umiam Project	0	0	80
5	Meghalaya Livelihood To Market Projects (Megha-Lamp)	0	110	50
6	Deen Dayal Upadhaya Grameen Kaushalya Yojana	13.8595 556	35.7667	33.97
7	Meghalaya Programme for Adolescent Wellbeing, Employment and Resilience (MPOWER)	0	20	30
8	District Treasuries-	26.4153 546	27.8821	29.9472
9	Meghalaya Enhancing Governance and Service Delivery Capability	2	20	20
10	My Meg Programme	13.75	20	20
11	Youth Engagement through Empowered Youth Organization (YESS)	2	20.5	20
12	Sustainable Tourism Enhancement for Lively Hood (STEFLI)	0	0	19
13	Establishment / Construction of Disability Sports Centre	0	2.5	17
14	Guarantees Redemption Fund - Administered by Finance (Economic Affairs) Deptt.	14.9022	14.53	15.54
15	Establishment of Director of Local Fund Audit.	11.6204 541	13.3932	15.4386
16	Pension Welfare of Persons with Disabilities	12.8133	15	15
17	Meghalaya State Employment Promotion Council	1.7735	3.7872	13.8058
18	Audit Staff-	11.8684 775	14.9913	12.377
19	Eco Tourism Development for Empowering Rural youth and Conserving Natural Resources in Sohra (Cherrapunjei), Meghalaya.	0	20	12
20	Start-up Village Entrepreneurship Programme	1.88333 33	10	11.6675
21	Strengthening of the Directorate District Labour Office and Opening of Sub-Divisional Offices.	11.7438 725	12.3578	10.2946
22	Convergence for tourism with PMEGP.	3	5	10

Sl.N o.	Scheme Name	AG 2023-24	BE 2024-25	BE 2025-26
23	Skill Development Initiative	8.8073	10	10
24	District Organisation-	9.52922 79	9.8999	9.5645
25	Handloom Institution/Production Centres-	7.77152 22	8.2848	8.6405
26	Mulberry Farm and Extension Centre.	7.19670 81	8.0239	7.3768
27	Industrial Training Inst. (Introduction of New Trade)	7.84412 83	10.1568	7.2306
28	Eri Grainages and Concentration Centres._	5.87847 03	6.3968	6.5098
29	Acquisition of Land at Industrial Park/Garo Hills	0	6	6
30	Development of Industrial Areas	1.99	2	6
31	Enhancing Skill Development Infrastructure in North Eastern State & Sikkim	0	6	6
32	Assistance to State District Subdivision Sports Association	3.056	6	5
33	Chief Minister	2.40967 92	5	5
34	Establishment of Industrial EState-	0	5	5
35	Institute of Entrepreneurship	0	5	5
36	National Urban Livelihood Mission (NULM)	3.111111	5	5
37	Head Quarters Organisation	4.2096 486	4.8639	4.7864
38	Micro & Small Enterprise Cluster Development Programme (MSE-CDP) Previously(11)	0.23302 1	6.325	4.6145
39	Integrated Scheme for Development of Textile Industry under Silk Samagra-2	0	4.1221	4.1221
40	Grant under Article 275(1) for Promotion of Cultural ProgrammePreviously(14)	0	4.01	4.01
41	Planning Machinery at Headquarter-	3.69113 82	3.93	4.01
42	Headquarters Organisation for Handloom and Sericulture.	3.48424 43	3.6552	3.885

Sl.N o.	Scheme Name	AG 2023-24	BE 2024-25	BE 2025-26
43	Headquarters Establishment	3.39260 16	3.6841	3.78
44	Sub-Divisional and Rural Establishment-	3.52454 3	3.9501	3.7554
45	Setting of New I.T.I.	3.02659 88	5.1123	3.4157
46	District Establishment (Handloom)	2.9060 097	3.2184	3.376
47	District Establishment-	4.07465 67	4.4625	3.1377
48	Sub-Divisional and Rural Establishment.	2.76177 54	2.9021	3.1061
49	All India Services Pre-Examination Training Centre For St/Sc	1.11	1.8855	3
50	Central Assistance for Directorate of Food ProcessingPreviously(04)	0	3	3
51	Mainstream Aspirational District through Skill Development Programme under SANKALP Project	0.0678 852	1.05	3
52	Other Tourist Information Centres-	2.30059 68	2.5288	2.7
53	Establishment of Directorate of Accounts & Treasuries	2.40371 44	2.6082	2.6682
54	District Establishment (Sericulture)	2.47146 68	3.097	2.6402
55	Establishment of Asst Director of Local Fund Audit, Tura	1.79303 89	2.1369	2.392
56	Weavers Extension Service Centre.	2.17259	2.1876	2.3323
57	Regional Centre for Training and Production of Mushroom	2.48321 1	2.4832	2.3177
58	Implementation of Disability Act,1995	1.81543 75	2.2	2.3

Sl.N o.	Scheme Name	AG 2023-24	BE 2024-25	BE 2025-26
59	Upgradation of Existing (Mulbery, Eri& Muga)Departmental See Farms Including Mechanization, Re-Plantation Programme, Irrigation, Modernisation of Equipments, Seed Testing EquipmentsPreviously(37)	1.85070 56	1.8546	2.2256
60	Employment Exchanges at Jowai/Shillong /Sohra/Nongpoh/Tura/BaghmaraPreviously(01)	2.73013 85	3.381	2.1743
61	Handloom Demonstration -Cum- Production Centres.	1.67146 94	2.0807	2.0974
62	Border Trade in Meghalaya	1.811507	0	2
63	Capacity and Training under Tourism Mission for IBDP	0	0	2
64	Construction or Development of Rural Market under NLCPR Schemes - DONER	0.208	2	2
65	Purchase and Acquisition of Land for Creation of Tourism Related Infrastructure	0	0	2
66	Scheme for Implementation of Persons with Disabilities Act (SIPDA)	0	5	2
67	Upgradation of Departmental Training Centres	0.25221 7	2	2
68	Silk Reeling Centres.	1.36965 14	1.7539	1.7716
69	Muga Farm Centres and Block Plantation including Tassar.	1.41759 9	1.6802	1.6611
70	Assistance to State Sport Council--	1.2084	1.64	1.64

SDG 9: Industry, Innovation, and Infrastructure

Sl.No	Scheme Name	AG 2023-24	BE 2024-25	BE 2025-26
1	Pradhan Mantri Gram Sadak Yojana (PMGSY)	0	430	465
2	Construction /Upgradation of Roads	485.3121389	440	450
3	Integrated Transport Development Programme	0	0	370
4	Road Finance from Central Road Fund- 8449-Other Deposit-103-Subventions from Central Road Fund.	0	0	291.1862
5	Construction of Outdoor & Indoor Stadium	120	120	236
6	Other Maintenance Expenditure- Road Works	190.909005	155	200
7	Divisional and Subordinate Offices(Roads)- Previously(07)	149.2761202	155.8104	167.733
8	Building Infrastructure	0	0	150
9	Construction of Rural Roads.	152.9972694	200	150
10	Roads-Finance from NABARD Loan etc.	141.1476362	0	150
11	Work Charged Establishment- Road Works	152.7504362	124.1323	148.0507
12	Functional Non-Residential Buildings under General Services-	26.9187651	57.9205	84.5952
13	Information And Technology Deptt	32.9251374	79.0985	81.8256
14	Maintenance of completed Pradhan Mantri Gram Sadak Yojana (PMGSY) Roads	35	45	80
15	Construction ,Renovation and Maintenance of Govt.Residential / Non-Residential Buildings for the Existing Blocks and New Blocks.	76.4934	30	75
16	Upgradation of Kutcha Roads to all Weather Roads	0	72	73
17	Mawmluh Cherra Cement Limited (MCCL)	7	5	71.9171
18	Financial Assistance to the District Councils on the Recommendation of the Finance Commission	0	66.1002	68.1014
19	Road Finance from NABARD Loan etc.	0	100	53.37
20	Chief Minister's Special Development Fund	28	40	50
21	Replacement of SPT Bridges with RCC Permanent Bridges	0	50	49.2675

Sl.No	Scheme Name	AG 2023-24	BE 2024-25	BE 2025-26
22	Pradhan Mantri Gati Shakti	6	10	42
23	Pradhan Mantri Jan Vikas Karyakaram (PMJVK)	31.308454	110	41.99
24	Other Maintenance Expenditure.	45.1833616	33.1687	31.0735
25	Construction of Technology Park	50	40	30
26	North East Special Infrastructure Development Scheme (NESID)	0	15	30
27	Other Maintenance Expenditure- Road Works	25.1809078	25.3459	30
28	Special Plan Fund (SPF)Previously(17)	32.800985	0	30
29	Assistance to the Meghalaya Transport Corporation	0	0	21
30	Construction of Rongjeng Mangsang Adokre Road	0	10	20
31	Periodical Renewal of existing RoadsPreviously(01)	16.01801	20	20
32	Work Charged Establishment.	16.3341818	21.1411	19.6232
33	District Commerce & Industries Centres-	17.4337312	19.1332	18.2242
34	Divisional and Subordinate Offices(Buildings)- Previously(08)	13.7739544	16.4923	16.795
35	Geology and Mining Establishment-	13.0068182	11.1568	15.0041
36	Financial Assistance to the Victims of Natural Calamities	1.125	1.2	15
37	Maintenance and Repairs	0.77	10	14.8761
38	Work Charged Establishment	6.2423039	13.5909	14.7
39	Superintending Engineers and their Establishments(Roads)- Previously(04)	11.2837131	12.3775	13.184
40	Establishment of District Transport Officers & Secy.etc.--	11.1906125	11.9465	12.6801
41	Ongoing SCA Proposals	0.4097502	0	12
42	Chief Engineer and his General Establishment(Roads) Previously(01)	10.2930264	12.1433	11.901
43	Up gradation and improvement of Computer Networks in Treasuries	12.1414797	0.895	10.91
44	Other Maintenance Expenditure	10.7271857	7.9961	10.8079
45	P.W.D. Secretariat- Previously(01)	7.3261029	8.551	10.4515
46	Chief Minister Village Connectivity SchemePreviously(06)	0	10	10
47	Construction of Departmental Residential Buildings	0	1.5	10
48	Construction of Rongai Valley Medium Irrigation Project	0	0	10
49	Creation, Strengthening and Expansion of Optical Fiber Network	0	20	10
50	Emergency Works	0	0	10

Sl.No	Scheme Name	AG 2023-24	BE 2024-25	BE 2025-26
51	North East Road Sector Development Scheme (NERSDS)	0	20	10
52	Intensive Mineral Investigation --	4.6898651	5.8471	8.6871
53	Construction and Maintenance of Departmental Residential Buildings Previously(01)	3.7473883	13.0499	7.99
54	Chief Engineer and his Establishment (Buildings) Previously(02)	6.0109853	6.9979	7.1
55	Periodical Renewal of existing Roads.	4.9021361	7	7
56	Subsidies to MGCC	0	0	7
57	Technical Branch under Chief Engineer- Previously(03)	5.6586622	6.6418	7
58	Rectification /Improvement of road accident black spots on State Roads.	0	6	6.935
59	Mechanical Workshops.	5.8706577	6.512	6.6395
60	Chief Minister Youth Development SchemesPreviously(18)	5.5	6	6
61	Project under Meghalaya Industrial Development Corporation Ltd (MIDC)	10	5	6
62	Non Lapsable Central Pool of Resources for Development of North East	0	5.7531	5.7531
63	Food Park	0	5.7	5.7
64	Grant in aid to Khadi Industries.	5.22	5.22	5.4979
65	Directorate of Commerce and Industries	4.9754021	5.5253	5.3728
66	Construction of Outdoor and Indoor Stadium	0	0	5
67	Corpus Fund for Promotion of Arts & Cultural Enrichment (Space)	0	1	5
68	Special Plan Assistance (SPA 2014-15)Previously(21)	1.0915171	0	5
69	Studies Consultancy Services	0	5	5
70	District Organisation--	4.1914623	4.6126	4.6662

SDG 10: Reduce Inequality

Sl.No	Scheme Name	AG 2023-24	BE 2024-25	BE 2025-26
1	Financial Assistance to the District Councils on the Recommendation of the Finance Commission	0	77	78
2	Border Areas Programme under Border Areas Development	0	0	56.1978
3	National Social Assistance Programmes (NSAP) Old Age	46.2316584	18.2256	53.6948
4	Rashtriya Gram Swaraj Abhiyan (RGSA)	6.6666667	66.67	36.6667
5	Tribal Area Development Programme under Article 275(1)	0	5.5	10
6	Border Areas Programmes under Border Area Department.	6.6772705	7.5946	8.1779
7	National Social Assistance Programmes (NSAP) Assistance to Widow	6.5743304	7.4777	7.886
8	Mahila Kisan Sashaktikaran Pariyojana (MKSP)	0	0.688	6.26
9	Directorate of Community Development. Previously(04)	7.4927697	3	5
10	Pradhan Mantri Matru Vandana Yojana (PMMVY)	0	0	3.7
11	Border Areas Programmes under Education	0	0	3
12	Integrated Value Chain Development Project of Eri Silk Cluster Under Innovation Fund Component of National Rural Livelihood Mission (NRLM)	0	5	2.6675
13	Implementation of Children Act.Establishment of Juvenile Guidance Centre.--	2.1010257	2.4775	2.6459
14	Grants-in-aid to NGOs running Special School for children with Special Needs	1.7649	1.9108	2
15	National Family Benefit Schemes	0	1.6089	1.5421
16	National Social Assistance Programmes (NSAP) Assistance to Person With Multiple Disabilities	1.3466964	1.5238	1.5268
17	Half Way Home for Mentally Cured, Abandoned Person	0.93528	0.7015	1.4
18	Social Mobilisation Centre at District Head Quarters	0	1	1
19	Meghalaya State Public Service Delivery Commission	0.3584165	0.555	0.625
20	Special Central Assistance to Tribal Sub Scheme	0	0	0.5555
21	Beti Bachao Beti Padhao	0	0	0.5
22	Field Survey of Social Problem-	0	0.5	0.5
23	Border Areas Programmes under Border Areas Development	0	0	0.366

Sl.No	Scheme Name	AG 2023-24	BE 2024-25	BE 2025-26
24	S & T Entrepreneurship Programme	0	0.28	0.308
25	The Meghalaya State Fund for Persons with Disabilities	0	0.4	0.25
26	Meghalaya Information Commission (Right To Information Act).	0.0169	0.24	0.24
27	Scheme for Welfare of Transgender Persons	0	0	0.2
28	Sansad Adarsh Gram Yojana (SAGY)	0	0.165	0.165
29	Grant for Holding Ex-Servicemen Rally.	0.09	0.09	0.1
30	NEC Share	0	0	0.055
31	Construction of Ropeways	0	0	0.05
32	Sansad Adarsh Gram Yojana (SAGY)	0	0.0165	0.0184
33	Smart Villages Project	0	0.01	0.01

SDG 11: Sustainable Cities and Communities

Sl.No	Scheme Name	AG 2023-24	BE 2024-25	BE 2025-26
1	Special Plan Assistance(SPA) Previously(17)	174.49	265	328.4332
2	Special Plan Assistance (SPA)	66	1	285
3	Special Assistance to States	0	0	179
4	Smart Cities Mission	25	72	95.865
5	Transferred to 8121- General and other Reserved Fund-122-State Disaster Response Fund	30.4	116.53	88.89
6	Upgradation of the Standard of Administrarion Awarded by the fifteenth Finance Commission	33	200	78.01
7	Urban Infrastructure Development Fund to be funded by National Housing Bank (NHB)	0	0	60
8	Assistance to Municipal Board for Shillong/Jowai/Tura etc. for Special Purposes.	32.7756511	27	50
9	Infrastructure Development.	14.9979529	50	50
10	Housing for All (Urban) Mission for Centrally Sponsored Schemes inclusive of State SharePreviously(21)	0.054	42.7	31
11	Assistance to Municipal Board for Shillong/Jowai/Tura etc. for General Purposes.	26.9455995	20	26.9432
12	Swach Bharat Mission- U.2.0	13.965	20.11	25.9403
13	Land Bank-MTDC	10.89	12.5	25
14	Acquisition of Landfill site at Shillong,etc.	3.28	8	20
15	Development of Infrastructure at different Tourist Spots in Meghalaya	2.8963924	20	20
16	Assistance to Local Bodies,Corporation,MUDA etc.	2.8907029	15	15
17	Hello Meghalaya	0	12	15
18	Upgradation of Umroi Airport.	4.9287322	10	15
19	Construction of Emergency Operation Centres(EOCs)	0.25217	15	14.25
20	Special Urban Work Programme.(Including Chief Minister's Special Urban Development Fund).	0	0	13.75
21	Construction of Helipad at Shillong.	0	5	12.5
22	Atal Mission for Rejuvenation & Urban Transformation (AMRUT) for Centrally Sponsored Schemes inclusive of State SharePreviously(20)	48.2	25.29	12.2928

Sl.No	Scheme Name	AG 2023-24	BE 2024-25	BE 2025-26
23	Subsidy to Private Airlines.	0	5	12
24	Maintenance of Core Tourism Infrastructure	3.6745813	12	11.8
25	Publicity Tourist Festival	9.3654689	0	11
26	District Offices	8.4327315	9.247	10.3409
27	District Offices--	6.258516	6.9185	10.095
28	Construction of Thadlaskein Hospitality Complex	2	5	10
29	Implementation of Schemes under PM-eBus Sewa Schemes	0	0	10
30	Lumpsum Fund for Development of North Eastern States	0	0	10
31	Sustainable Transport and Efficiency Mobility Society	0	10	10
32	State's Share for Computerisation of PACS under NABARD Schemes	0	0	8.4212
33	Provision of Units of MTDC	2.6939501	5	8
34	Construction of Baljek Airport, Tura.	0	5	7.5
35	Smart Cities Mission (SCM) Centrally Sponsored Schemes Inclusive of State Share	5	7.2	7.15
36	Headquarter Organisation-	4.8352677	5.2592	5.8091
37	Headquarter Establishment--	3.1538948	4.1974	5.6149
38	Capital Contribution to Meghalaya Transport Corporation	0	0	5
39	Construction of departmental Non-Residential Build	0.6347598	5	5
40	Construction of Helipad at Tura	0	5	5
41	Development of Core Tourism Infrastructure	0	5	5
42	Development of Supporting Tourism Infrastructure	0	5	5
43	Infrastructure Development for City Transport at Shillong.	9	3	5
44	State Urban Infracture Development Initiative. Previously(14)	10	4	5
45	Assistance to Meghalaya State Housing Board.	2.484	2.484	4.5
46	Sport Talent Search Scholarship etc	3.6269	5	4.5
47	Assistance for Improvement of Play Ground Including Schools Ground	1.2	1.5	4
48	Assistance to Meghalaya Urban Development Authority.	3.2231152	3	4
49	Tourism Sites & Attraction Development & Management Framework	3	4	4
50	Atal Mission of Rejuvenation and Urban Transformation (AMRUT) Centrally Sponsored Schemes inclusive of State Share.	0	1.48	3.6405
51	Smart Cities MissionPreviously(27)	139.5	50	3.53

Sl.No	Scheme Name	AG 2023-24	BE 2024-25	BE 2025-26
52	Infrastructure Development for City Transport	0.006485	3	3
53	Construction of Departmental Residential Building	0.1116655	2.4	2.4
54	Slum Improvement Clearance Schemes in Congested Town Areas.	1.1889606	2.4	2.4
55	Swachh Bharat Mission -U.2.0	1.5516666	2.239	2.239
56	Housing for all (Urban Mission) Centrally Sponsored Schemes inclusive of State Share.	1.336644	3.9	2.175
57	Assistance to Local Bodies,Corporation,MUDA etc..	1.3	2	2
58	Financial Assistance To M.T.D.C.	1.05511	2	2
59	Rental Housing Scheme	0	0	2
60	Share Capital Contribution to Livestock Coops.	0	0.6	2

SDG 12: Responsible Consumption and Production

Sl.No	Scheme Name	AG 2023-24	BE 2024-25	BE 2025-26
1	Pradhan Mantri Krishi Sanchai Yojana (PMKSY)Previously(o8)	53.775875	119.2	118.7222
2	Rashtriya Krishi Vikas Yojana (RKVY)	0	18.68	18.27
3	NABARD Loan for Construction of MIPS	4.0026851	9.16	13.9354
4	Press Administration	6.7946046	7.7839	8.8307
5	Machine Printing Branch--	6.0635351	7.0175	7.5681
6	National Bank for Agriculture and Rural Development (NABARD) Loan for construction and improvement of Minor Irrigation Schemes	6.075	6.425	7.415
7	Composing and Standing Form Branch--	5.6604034	6.8164	7.244
8	Purchase for State Government Offices-	2.1079713	3.049	5.059
9	Springs Conservation and Rejuvenation Works	0	4.75	4.75
10	Binding and Warehousing Branch--	4.5946744	5.2306	4.6334
11	Printing and Distribution of Publicity Literatures-	4.6877675	4.5	4.5
12	New Supplies	2.1998977	2.2	3.3
13	Flow Irrigation Works	2.0491648	3	3
14	Maintenance of Supporting Tourism Infrastructure	0.1375729	3	3
15	Plant Protection including IPM (under Agriculture)	1.6824986	1.6825	2.8611
16	Water Harvesting	1.5	2.18	2.51
17	Reading Branch--	2.1469241	2.2339	2.4575
18	Bio Resources Development	0	0	2.4
19	Works-	0.94615	2.1	2.2
20	Micro Irrigation	0	2.0045	2.0045
21	Machinery and Equipment/Tools and Plants	0	0.95	2
22	Improvement Modernisation of existing Minor Irrigation Schemes	0.7558076	1.7	1.97
23	Flood Damage Restoration of Minor Irrigation Projects	0.69	1.59	1.835
24	ACA under RKVYPreviously(o8)	0	1.9425	1.6575
25	Organic Manure Previously(37)	1.478	1.478	1.5792
26	Enforcement-	1.440531	1.579	1.579
27	Administrative Organisation-	1.2706902	1.5746	1.5746

Sl.No	Scheme Name	AG 2023-24	BE 2024-25	BE 2025-26
28	Repairs, Renovation & Restoration of Water Bodies/ Pradhan Mantri Krishi Sinchai Yojana (PMKSY)	0	1.505	1.51
29	Stationery and Stores Office-	0.9942322	1.0627	1.266
30	Mission Organic Value Chain Development for North Eastern Region	0	1.169	1.169
31	Jhum Control Schemes	0.014295	1.0813	1.0814
32	Establishment Maintenance of existing Minor Irrigation Schemes	0.375	0.72	0.825
33	Command Area Development Activities	0.5	0.67	0.78
34	Plant Protection including IPM (under Horticulture)	0.3599675	0.36	0.7312
35	Office of the Inspector of Legal Metrology, Shillong, East Khasi Hills District.	0.6352685	0.6604	0.6604
36	Rationalisation of Minor Irrigation Schemes Previously(02)	0	0.65	0.65
37	Organic Manures	0.365	0.365	0.6176
38	Production of Bio-Fertilizers	0	0	0.5195
39	Office of the Assistant Controller of Legal Metrology, Western Zone, Tura, West Garo Hills District.	0.4637774	0.5218	0.5192
40	Printing at Private Press-	0.193	0.5	0.5
41	Office of the Inspector of Legal Metrology, Tura, West Garo Hills District.	0.4126527	0.4562	0.4562
42	Office of the Assistant Controller of Legal Metrology Eastern Zone, Shillong, East Khasi Hills District	0.3357019	0.4541	0.4541
43	Office of the Inspector of Legal Metrology, Nongstoin West Khasi Hills District.	0.3843047	0.4112	0.4112
44	Laboratories and Analytical Unit-	0	0.3908	0.3795
45	Office of the Inspector of Legal Metrology, Williamnagar, East Garo Hills District.	0.3185079	0.3694	0.3694
46	Book Depot	0.3058434	0.3203	0.368
47	Office of the Inspector of Legal Metrology, Nongpoh Ri Bhoi District.	0.3356796	0.3642	0.3642
48	Bio- Control Laboratory and Pesticide Testing Lab	0.1956131	0.1957	0.354
49	Integrated Development of Water Resources (IWRM)	0.25	0.3	0.35
50	Mechanical Branch --	0.2376046	0.3025	0.3327

SDG 13: Climate Action

Sl.No.	Scheme Name	AG 2023-24	BE 2024-25	BE 2025-26
1	Meghalaya State Watershed & Wasteland Development Agency	11.6355471	76.18	100.6916
2	Community Forestry Project	0	100	100
3	Social Forestry	22.1905576	27.108	28.0436
4	Forest Protection Schemes and Works-	18.5866207	19.2328	14.1575
5	Forest Ranges and Beat Offices	11.5830475	12.404	13.6196
6	Other Wild Life Preservation Works	10.044482	11.3038	12.4406
7	FINANCIAL ASSISTANCE TO MEGHALAYA STATE POLLUTION CONTROL BOARD	0	0	11.4425
8	Head Quarters Organisation	9.0898877	10.0786	10.7923
9	Establishment of Wild Life Sanctuary	9.5584607	9.804	10.2804
10	Corpus Fund for Convergence	0	10	10
11	Meghalaya Livelihood To Market Projects (Megha-Lamp)	0	30	10
12	Divisional Forest Officer	4.5838325	4.6736	5.0283
13	Cash Crop Development Works	2.2318013	4.3882	3.9618
14	Contribution to Eco. Dev. Society	1.457058	1.0925	3.5
15	Financial Assistance to Forest Development Corporation of Meghalaya	2.4097	2.4097	3
16	Working Plan Division	2.5299136	2.7186	2.9044
17	Operation Soil Watch.-	2.4388276	2.6706	2.8164
18	Establishment of Forest Research Division including Laboratory	2.4512405	2.5171	2.6384
19	Integrated Transport Development Programme	0	0	2
20	Forest Resources Survey Division	1.4683535	1.7686	1.8908
21	Studies & Training in Forest School	1.4906557	1.6778	1.7848
22	Ecology and Environment	1.2694725	1.557	1.6122
23	Plantation of Medicinal Plants	1.3683142	1.3792	1.5638
24	Water Conservation and Distribution Works	1.61795	0.7732	1.4281
25	FINANCIAL ASSISTANCE TO STATE ENVIRONMENT IMPACT ASSESSMENT AUTHORITY/STATE EXPERT APPRAISAL COMMITTEE	0	0	1.4
26	Establishment of Forest Statistical Division	1.1346995	1.2148	1.3539
27	Recreation Forestry	0.9005138	1.2447	1.2755

Sl.No.	Scheme Name	AG 2023-24	BE 2024-25	BE 2025-26
28	Forest Nurseries	1.018755	1.1218	1.2587
29	Umbrella Project/Ecological Sohra Restoration Project	1.0903836	1.1488	1.2343
30	Meghalaya State authority	1.115369	1.0673	1.128
31	Establishment of Parks and Botanical Gardens	1.0756796	1.0661	1.1256
32	Afforestation of Plan Catchment Area of Umiam Hydro Electric Project	0.8135865	0.9825	1.063
33	Expenditure of Chariman/Dy. Chairman./Vice Chairman (Meghalaya Forest Dev. Corp.)	1.503778	0.5865	1.0575
34	Statistical , Planning and Evaluation Unit	0.5675548	0.9223	1.0457
35	Expenditure on Environmental Forestry and Vonomohotsava.- Previously(02)	0.7333162	0.9675	1.0297
36	Studies and Training in Forest Colleges	0.5887	0.9378	1.0128
37	Forest Utilisation Office	0.7607633	0.9363	0.9954
38	Timber Treatment and Seasoning Plant	0.74293	0.8883	0.9576
39	Wards Lake Establishment * *	0.5561926	0.8797	0.9
40	Water Harvesting Works/Farm,Ponds etc.,	0.6433	0.7098	0.8615
41	Conservation of Orchids and Multiplication Project	0.4748098	0.6356	0.6495
42	Bio Resources Development	0	0.61	0.64
43	Ecological Restoration of Cherrapunjee Previously(27)	0.466444	0.636	0.636
44	Afforestation of Catchment Area of Kopili Hydro Electric Project.-	0.6972046	0.5921	0.6272
45	Climate change study & Adaptation for Water Resources Sector including infrastructure and procurement of equipment	0.275	0.5	0.59
46	Setting up of Corporation and Project Formulation Cell for Development of Forest	0.4067795	0.5403	0.5831
47	Plywood Plantations -	0.347231	0.4832	0.5445
48	Plantation of Quick Growing Species	0.5252487	0.4905	0.5335
49	Divisional Soil Conservation Offices	0.4801	0.5521	0.5253
50	Demarcation and Consolidation (Excluding Extension) of Forest	0.424615	0.4598	0.4646
51	Intensification of Forest Management Previously(11)	0	0.459	0.459
52	Financial Assistance to the Meghalaya State Medicinal Plants Board	0.235	0.32	0.4
53	Green India MissionPreviously(37)	0	0	0.4
54	Purchase of Land	0	0.35	0.4
55	Tree Improvement Development	0.3126365	0.3755	0.3986
56	Conduct of State & District Level Mock Exercise	0.4780732	0.42	0.39

SDG 15: Life on Land

Sl.No.	Scheme Name	AG 2023-24	BE 2024-25	BE 2025-26
1	Soil and Water Conservation Schemes under NABARD	20.4999853	20	30
2	Pradhan Mantri Krishi Sinchayee Yojna-Watershed Development Component (PYMKSY-WDC)	11.1116338	28.8632	29.0663
3	Meghalaya State authority	16.5434613	16.6855	23.6625
4	Afforestation	19.8080254	9.9969	22.4426
5	Divisional Soil Conservation Offices	19.3206824	21.2905	20.9465
6	Soil Conservation Range Offices	17.1529785	19.3618	20.0545
7	Integrated Development of Wildlife Habitats	1.009614	15.6159	18.3359
8	Protection of Vulnerable Catchment Areas (KFW) (EAP)	0	0	12
9	Financial Assistance to Meghalaya Zoo Project Implementation Society	2	5.4	11.17
10	Construction of Departmental Non-Residential Building	0	5.7499	10.6095
11	Cash Crop Division	9.4228373	10.8792	10.5336
12	Sloping Agriculture Land Technology (SALT)	3.119	7.1987	9.6
13	Watershed Management Division	5.5358649	6.3925	6.3381
14	Directorate of Soil Conservation	4.1814578	5.0385	4.5205
15	Critical Flood Control and Anti-Erosion Schemes	0	3.48	3.8756
16	Jhum Control Schemes	2.8380575	3.3883	3.4399
17	Works	0	3.36	3.428
18	Intensification of Forest Management Previously(11)	0	3.384	3.384
19	Ecology and Environment	1.03915	3.0444	3.0444
20	Project Formulation Cell	2.7123115	3.1309	2.9643
21	Training at Soil Conservation Centres	2.6657604	3.1606	2.861
22	State Soil Survey Organisation Previously(10)	3.032061	3.0278	2.5866
23	Soil Survey Division	1.9508548	2.3623	2.4259
24	Erosion Control Works	1.66309	0.788	2.1436
25	Conservation Training Institute	2.028387	2.1623	2.1066
26	Other Wild Life Preservation Works	0.344005	2.0098	1.9138

Sl.No.	Scheme Name	AG 2023-24	BE 2024-25	BE 2025-26
27	Contribution to Eco. Dev. Society	1.2775	1.8	1.8
28	Intensive Sports and Youth Development Programme	1.8	1.8	1.8
29	Head Quarters Organisation	0.9829668	1.7345	1.7369
30	Nursery	0.6622255	1.725	1.725
31	National Mission on Medicinal Plants Previously(38)	0	1.6969	1.6969
32	Construction and Maintenance of Departmental Buildings.	0.7459751	1.572	1.572
33	Establishment of Wild Life Sanctuary	0.7338625	1.4944	1.4944
34	Meghalaya State Watershed & Wasteland Development Agency	0	1.4568	1.4568
35	Promotion of Herbal, Aromatic & Medicinal Plant	0	0	1.43
36	Soil Conservation Engineering Division	1.2651671	1.4035	1.3194
37	Soil Conservation Survey Schemes	1.0689533	1.3236	1.2538
38	Other Maintenance Expenditure	0.9656115	1.0411	1.1757
39	National Afforestation Programme Previously(36)	0	0.324	1.124
40	Social Forestry	0.8425724	0.9277	1.1073
41	Construction of Departmental Buildings Previously(08)	0.48125	1.1	1.1
42	Green India Mission Previously(37)	0	0	1
43	Financial Assistance to Meghalaya State Wetlands Authority	0.63	0.86	0.86
44	Construction of Departmental Buildings	0.0942795	0.75	0.8
45	Forest Ranges and Beat Offices	0.4096671	0.7698	0.7704
46	Commercial Crops Development Board	0	0	0.75
47	Conservation Works* in Urban Area	0.56227	0.4363	0.713
48	Establishment of Forest Research Division including Laboratory	0.5225	0.7103	0.7103
49	Forestry Mission under the IBDP Previously(31)	0.1461633	0.66	0.66
50	Afforestation of Critical Catchment Areas.-	0.606631	0.635	0.635
51	Soil Conservation Research Centre	0.3642917	0.4696	0.6176
52	Financial Assistance to Meghalaya State Bio-Diversity Board	0.753348	0.54	0.54
53	Expenditure on Environmental Forestry and Vonomohotsava.- Previously(02)	0.3169118	0.5366	0.5366
54	Financial Assistance to Forest Development Corporation of Meghalaya	0.5	0.5	0.5
55	Forest Protection Schemes and Works-	2.00232	0.4756	0.4756

SDG 16: Peace Justice & Strong Institutions

Sl.No.	Scheme Name	AG 2023-24	BE 2024-25	BE 2025-26
1	District Executive Police	470.8160695	467.5309	496.0512
2	Construction of Residential Buildings etc. at New Assembly building at Mawdiangdiang	0	168	169.1
3	1st Meghalaya Police Battalion.	70.4702678	76.334	86.0606
4	Raising of 4th MLP Bn/2nd IR Bn.	58.3094081	79.7823	84.4239
5	Functional Non Residential Building under General Services	25.29	80	80
6	2nd Meghalaya Police Batallion.--	66.2766376	74.0389	78.2286
7	Raising of 5th M.L.P. Bn/3rd IRBN.	65.0081698	65.6631	69.5273
8	Secretariat Establishment	53.3140504	63.2537	68.4518
9	Raising of 6th MLP Bn/4th IRBN.	56.7830359	65.0052	68.292
10	Protection and Control (Fire Service Station)	56.3607604	63.2414	67.1069
11	Raising of 3rd M.L.P.Battalion./IRB.	48.8965868	60.2013	63.7122
12	Multi-Purpose Special Force Battalion.	47.3500388	58.8424	62.2135
13	D.C.'s Establishment.	44.0098094	46.2101	51.0461
14	State Special Branch--	45.4904977	46.2617	50.7361
15	State Police Wireless Organisation.	39.8948021	44.8108	47.2894
16	Functional Non-Residential Buildings under General Services-	39.556876	20	47
17	Secretariat Administration Department(including other Minor Department not shown separately).--	32.4314868	36.6373	36.7525
18	Nazarat(including expenditure of all grade IV staff of the entire secretariat.)--	24.7469756	26.0753	28.2545
19	High Court/Bench Office --	17.8333805	25.1004	27.5718
20	Creation/Raising of Border Wing Home Guards-	20.5279232	24.5815	22.0756
21	Contribution toward NGO's under PPP (Recurring and Non Recurring)	25.547608	21.2215	21.2215
22	District and Session Judges Including Munsib Courts etc.,	18.9655199	19.9749	20.6039
23	District Establishment--	17.5011242	18.86	20.4198
24	Expenditure on Home Guards	20.3665781	19.5569	20.226
25	District Level Offices-	15.8461603	17.5668	18.19
26	Sub-divisional Establishment :-	9.9122796	12.4263	17.7027
27	National Law University Shillong	0.092	13.42	15.5

Sl.No.	Scheme Name	AG 2023-24	BE 2024-25	BE 2025-26
28	Inspector General of Police's Office.	7.0545085	9.8298	15.1648
29	Interior at new Assembly Building Mawdiangdiang	1	15	15
30	Construction of Administrative Building for the State Police/Police Stn. & Outpost	3.7085099	6.909	14.5
31	State Statistics Organisations	11.6230704	13.4372	13.828
32	Directorate of Anti-Infiltration.	12.3201388	12.8893	13.5884
33	Meghalaya Legislative Assembly Printing Press Previously(01)	10.5432449	12.79	13.37
34	Maintenance and Repairs	0	11.611	12.7721
35	Requisition of Vehicle.	10.2691612	12.1231	12.1231
36	Discretionary Grant by MLAs	6	12	12
37	Finance(excluding Economic Affairs Department).--	12.2644253	13.5767	11.7571
38	Members of Legislature	10.6931675	11.6808	11.6808
39	Directorate of Forensic Science	0	9.5954	10.6777
40	Police Infrastructure Renovation Fund	0	10.5	10.5
41	Estt.of Chief Judicial Majistrate and other Judicial Majistrate-	10.3390395	9.2267	10.0479
42	Construction of Residential Buildings	0	20	10
43	Implementation and Authentication under Aadhaar System	0	10	10
44	Interior at new Assembly Building Mawdiangdiang	0	10	10
45	Meghalaya Legislative Assembly-Guest House	0	10	10
46	Payments towards charges for requisition of Home Guards;-	7.524165	2.6754	9.8061
47	Meghalaya House,New Delhi-	8.491859	10.1472	9.3718
48	Work Charged Establishment	8.5343411	8.423	9.2829
49	State C.I.D.Organisation.	7.2007418	8.2357	8.7701
50	Expenditure on Police Check Post in Indo-Bangladesh Border.	7.3485659	8.2924	8.7292
51	Expenditure on Election to Lok Sabha and Rajya Sabha-	47.4160264	0	8.03
52	Expenditure on preparation and printing of Electoral Rolls for Assembly and Parliamentary Constituencies.-	7.2862105	8.7521	7.9599
53	Directorate Level Organisation	6.8646612	7.5369	7.7869
54	District and Sub-Divisional Information & Public Relations Offices-	6.9678698	7.0768	7.7746

Sl.No.	Scheme Name	AG 2023-24	BE 2024-25	BE 2025-26
55	Enforcement Branch-	5.4445811	5.751	7.4084
56	Payments towards charges for requisition of CRP/Outside Battalion---	2.5891979	7	7
57	Publicity through Cinematography and Exhibitions-	3.1781626	5.6884	6.6543
58	Establishment, Secretary, State Public Service Commission.	5.6828603	6.1159	6.5282
59	Police Training School/ College.	5.4647331	6.1181	6.4792
60	District Establishment.	5.2068325	5.93	6.2789

Indirect Untagged Expenditure

Sl.	Scheme Name	AG 2023-24	BE 2024-25	BE 2025-26
1	Superannuation and Retirement Allowances	870.5944205	829.5	954.71
2	Special Drawing Facility	1667.39	172.19	710.8
3	Family Pension for State Government Employees-	368.678731	326.2	421.45
4	7.63% Meghalaya State Dev Loan (MSDL), 2025.	0	0	300
5	Ways and Means Advances	1789.31	209	267
6	6.94 % Meghalaya State Dev Loan (MSDL), 2025.	0	0	200
7	Interest on General Provident Fund	170.3654671	173	188
8	Loan from NABARD	127.03591	145	165
9	Retiring Gratuities-	155.809614	150	162
10	New Loan 2020-21Previously(16)	143.9958002	143.9958	143.9958
11	New Loan (2024-25)	0	0	136.9299
12	Leave Encashment	127.0102466	146	131.7
13	New Loan 2022-23Previously(18)	137.1453008	137.1453	130.2053
14	Commuted Value of Pensions	121.4496712	195	130
15	Financial Assistance to District Councils for Special purposes	0	0	125.2177
16	New Loan 2023-2024	25.945	102.894	102.894
17	8.07 % Meghalaya State Dev Loan (MSDL),2025	0	0	100
18	8.10 % Meghalaya State Dev loan (MSDL),2025	0	0	100
19	8.28 % Meghalaya State Dev Loan (MSDL),2025	0	0	100
20	New Loan 2021-2022Previously(17)	95.1230006	95.123	95.123
21	New Loan 2019-20	92.9898	92.9898	92.9898
22	New Loan 2018-19Previously(14)	85.8205002	85.8205	85.8205
23	Miscellaneous	1.8197	7	81.0763
24	8.19 % Meghalaya State Dev loan (MSDL),2026	0	0	80
25	New Loan 2017-18Previously(13)	75.4857002	75.4857	75.4857
26	8.22% Meghalaya State Dev Loan (MSDL),2025	0	0	70
27	8.63 % Meghalaya State Dev loan (MSDL),2026	0	0	70

Sl.	Scheme Name	AG 2023-24	BE 2024-25	BE 2025-26
28	7.96 % Meghalaya State Dev loan (MSDL),2025	0	0	60
29	New Loan 2016-17	55.183	55.183	55.183
30	8.19 % Meghalaya State Dev loan (MSDL),2025	0	0	50
31	8.31 % Meghalaya State Dev Loan (MSDL),2025	0	0	50
32	Payment of Electricity dues in respect of various Government Department	0	0	50
33	The National Rural Employment Guarantee.	0	62.65	46.9878
34	Loans from NABARD	33.1773619	40	45
35	National Small Saving Fund	53.7532	54	43.2
36	Secretariat Establishment	30.2710011	26.75	37.3
37	Advances for Children Education	21.76042	35	35
38	Interest on Special Securities issued to National Small Saving Fund of the Central Government by State Government.	40.15208	36	31
39	Death Gratuities	26.7100871	30	25.3
40	Government's Contribution Under New Defined Contribution Pension Scheme - Tier - I	110.6589758	173	18.1
41	District and Session Judges Including Munsib Courts etc.,	2.8213321	1.8319	18.0445
42	District Executive Police	15.2674	16.774	17.5637
43	Scheme on End-to-End Computerization of TPDS	1.9255	0	16.2635
44	High Court/Bench Office --	14.7539491	9.3135	15.91
45	Members of Legislature	6.7308886	10.41	12.94
46	7.43% Meghalaya Special Bonds 2026	0	0	12.5
47	Operation of Helicopter Services	0	10	10
48	Piggery Mission under National Cooperative Development Corporation (NCDC) Development Scheme	9.3770645	10	10
49	Block Loans - 20 Years consolidated loan in terms of recommendation of the 12th F.C. Previously(03)	14.9031049	14.9032	9.8043
50	Additional Central Assistance for Externally Aided project	4.0896458	6.9442	9.3296
51	National Mission on Agricultural Extension & Technology (NMAET)Previously(15)	2.9744978	4.803	9.2487
52	Pension to Legislators-	9.5581729	15	8.95
53	Chief Minister	2.8002877	11.51	8.5

Sl.	Scheme Name	AG 2023-24	BE 2024-25	BE 2025-26
54	8.10% MSDL/MGS 2025	8.1	8.1	8.1
55	Strengthening of the Directorate District Labour Office and Opening of Sub-Divisional Offices.	0.5436842	1.3134	7.7408
56	Divisional and Subordinate Offices(Roads)- Previously(07)	7.070991	6.2129	6.9448
57	Compensation and other Bonds.	6.78	6.7809	6.7809
58	Director of Prosecution.	0	0	6.6
59	8.19% MSDL/MGS 2026	6.552	6.552	6.552
60	Integrated Child Development Service SchemesPreviously(05)	1.2724716	12.2403	6.54
61	Stage-II Block Offices :-	4.8929109	6.6604	6.3479
62	Secretariat Administration Department(including other Minor Department not shown separately).--	3.9381248	5.2001	6.1771
63	8.63% MSDL/MGS 2026	6.041	6.041	6.041
64	Payment due to Me.S.E.B./ Municipal Board/ Telephone Bill (BSNL) Previously(09)	4.1698774	5.9999	6.0366
65	Block Loan 2023-2024	0	6.3	5.9631
66	D.C.'s Establishment.	4.0966002	5.4596	5.72
67	Loan from NCDC.	5.38714	5.39	5.39
68	Digitalization of Legislative Records	1.091282	1.21	5.351
69	Directorate Of Food ProcessingPreviously(11)	1.2727654	5.2376	5.2425
70	Payment for Medical Treatment and Advance	3.1227111	4.8	5.09
71	Interest on Special Drawing Facility on 91 days Deposits	1.8254907	0.9	5
72	Payment dues to Me.PDCL./Municipal Board/ Telephone Bills (BSNL)	4.9179387	5	5
73	Meghalaya Administrative Training Institute	1.9170253	5.0005	4.9705
74	7.96% MSDL/MGS 2025	4.776	4.776	4.776
75	Block Loan 2022-2023	5.006853	4.8817	4.7566
76	Meghalaya House,New Delhi-	2.3758618	4.25	4.57
77	State Aquaculture Mission Previously(36)	2.0663679	3.7	4.507
78	Recruitment of Personnel in Meghalaya Police.	0.956538	4.16	4.16
79	8.28% MSDL/MGS 2025	8.28	8.28	4.14
80	8.19% MSDL/MGS 2025	4.095	4.095	4.095
81	8.07% MSDL/MGS 2025	8.07	8.07	4.035

Sl.	Scheme Name	AG 2023-24	BE 2024-25	BE 2025-26
82	Speaker and Deputy Speaker --	1.5222715	3.209	3.709
83	Establishment, Secretary, State Public Service Commission.	3.2934992	3.67	3.67
84	State Statistics Organisations	1.8994467	3.6227	3.5916
85	Expenditure on Primary Schools -	3.1274433	3.1682	3.37
86	Divisional and Subordinate Offices.	2.5631025	2.9355	3.3398
87	Block Loan 2020-2021	3.1705965	3.0872	3.0038
88	Pradhan Mantri Krishi Sinchayee Yojna-Watershed Development Component (PYMKSY-WDC)	0.4105884	2.9234	2.9234
89	8.22% MSDL/MGS 2025	5.754	5.754	2.877
90	Meghalaya House, Kolkata.	1.0878512	2.44	2.86
91	State Special Branch--	1.224845	2.843	2.843
92	District Jail,Shillong.	1.33155	2.68	2.84
93	2nd Meghalaya Police Batallion.--	1.2002258	2.814	2.814
94	Implementation of S.N.P under CSS	0	0	2.5
95	Mainstream Aspirational District through Skill Development Programme under SANKALP Project	0	2.5	2.5
96	Management of Debts	2.5039141	2.86	2.5
97	Press Administration	1.5907841	1.94	2.32
98	Social Forestry	0.7511915	2.2986	2.2986
99	District Jail,Jowai.	0.7315653	2.06	2.28
100	Payment due to Me.PDCL./Municipal Board/Telephone Bills (BSNL)	1.0768984	2.2644	2.2644



**DEPARTMENT OF FINANCE
GOVERNMENT OF MEGHALAYA**